

1999  
Boone County, Iowa  
Iowa North Zone (1401)  
NAD\_83(1996)

Point Number: **301**

Northing: **3460848.61(Ft)**      Easting: **4867520.05(Ft)**

Northing: **1054868.766(M)**      Easting: **1483623.077(M)**

Elev: **1031.22(Ft)** NAVD\_88

Elev: **314.316(M)** NAVD\_88      Ellip Ht: **285.176(M)**      96C Geoid Ht: **-29.140(M)**

Latitude: **41-59-37.675730 N**      Longitude: **93-41-51.525460 W**

Theta: **-0-08-02.23**      Combination Factor: **0.99996927**

Designation: **NGS Station "1370" of Ames Calibration Base Line**

**Monument Type:** 3/4" aluminum rod with Story County aluminum cap set flush with ground.

**To Reach:** \*\*\*\*See the 1988 Story Co GPS survey for complete station description\*\*\*\*

Date Printed July 29, 1999

1999  
Boone County, Iowa  
Iowa North Zone (1401)  
NAD\_83(1996)

Point Number: 401

Northing: 3412924.12(Ft)      Easting: 4867269.08(Ft)

Northing: 1040261.354(M)      Easting: 1483546.583(M)

Elev: 1033.99(Ft) NAVD\_88

Elev: 315.162(M) NAVD\_88      Ellip Ht: 285.035(M)      96C Geoid Ht: -30.127(M)

Latitude: 41-51-44.237290 N      Longitude: 93-41-53.361280 W

Theta: -0-08-03.48      Combination Factor: 0.99999864

Designation: 1-81-25

**Monument Type:** 3/4" aluminum rod with Story County aluminum cap set flush with ground.

**To Reach:** \*\*\*\*\*See the 1988 Story Co GPS survey for complete station description\*\*\*\*\*

Date Printed July 29, 1999

1999  
Boone County, Iowa  
Iowa North Zone (1401)  
NAD\_83(1996)

Point Number: 101

Northing: 3539778.13(Ft)      Easting: 4867472.06(Ft)

Northing: 1078926.533(M)      Easting: 1483608.452(M)

Elev: 1063.78(Ft) NAVD\_88

Elev: 324.240(M) NAVD\_88      Ellip Ht: 296.598(M)      96C Geoid Ht: -27.643(M)

Latitude: 42-12-37.400050 N      Longitude: 93-41-54.615180 W

Theta: -0-08-04.33      Combination Factor: 0.99993048

Designation: 36-86-25

**Monument Type:** 3/4" aluminum rod with Story County aluminum cap set flush with ground.

**To Reach:** \*\*\*\*\*See the 1988 Story Co GPS survey for complete station description\*\*\*\*\*

Date Printed July 29, 1999

1999  
Boone County, Iowa  
Iowa North Zone (1401)  
NAD\_83(1996)

Point Number: 81

Northing: 3540299.71(Ft)      Easting: 4740503.76(Ft)

Northing: 1079085.511(M)      Easting: 1444908.436(M)

Elev: 1152.57(Ft) NAVD\_88

Elev: 351.303(M) NAVD\_88      Ellip Ht: 324.433(M)      96C Geoid Ht: -26.870(M)

Latitude: 42-12-36.130650 N      Longitude: 94-10-01.812090 W

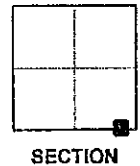
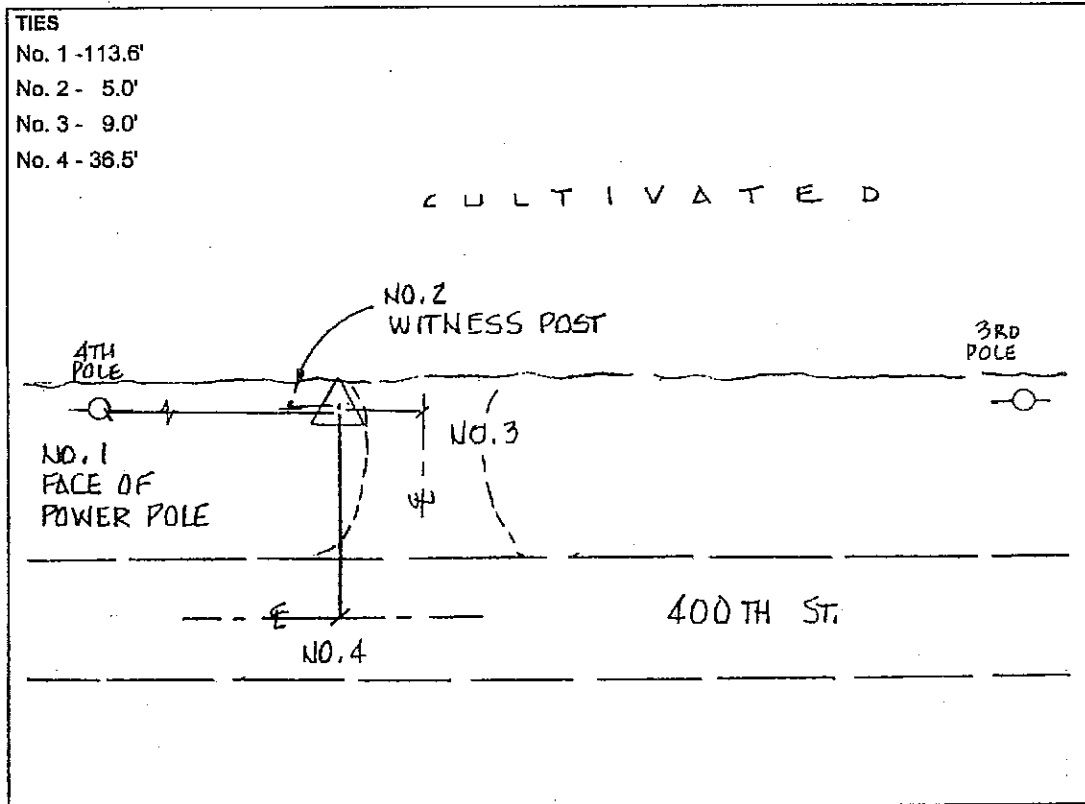
Theta: -0-27-07.82      Combination Factor: 0.99992616

Designation: 6081 WEBSTER CO GPS CONTROL PT

**Monument Type:** BERNTSEN top security rod with a 3-1/4" dia aluminum cap set inside access cover

**To Reach:** \*\*\*\*See the 1997 Webster Co GPS survey for complete station description\*\*\*\*

Date Printed July 29, 1999



SKETCH  
BY DSW  
DENI 9605023

1999  
Boone County, Iowa  
Iowa North Zone (1401)  
NAD\_83(1996)

Point Number: 82

Northing: 3540175.20(Ft) Easting: 4757074.25(Ft)

Northing: 1079047.560(M) Easting: 1449959.131(M)

Elev: 1145.91(Ft) NAVD\_88

Elev: 349.274(M) NAVD\_88 Ellip Ht: 322.426(M) 96C Geoid Ht: -26.848(M)

Latitude: 42-12-36.133320 N Longitude: 94-06-21.614360 W

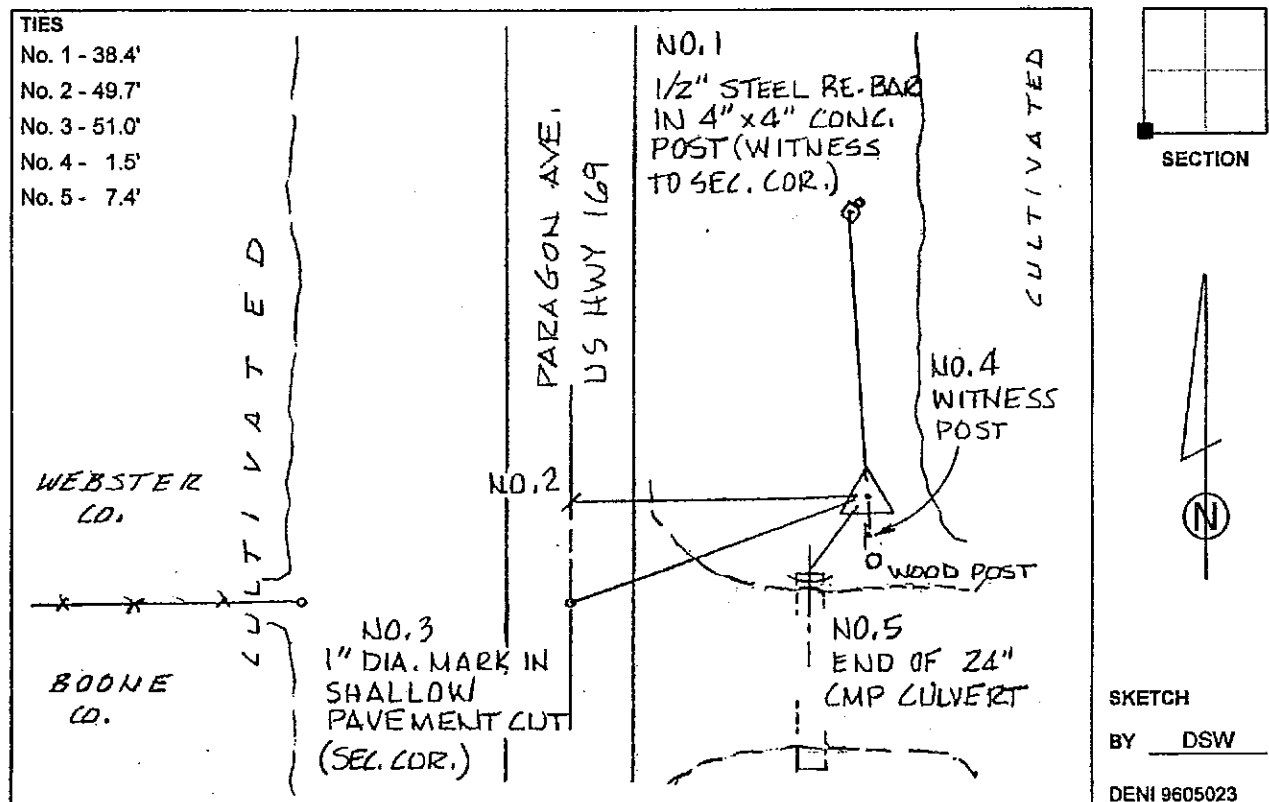
Theta: -0-24-38.58 Combination Factor: 0.99992647

Designation: 6082 WEBSTER CO GPS CONTROL PT

**Monument Type:** BERNTSEN top security rod with a 3-1/4" dia aluminum cap set inside access cover

**To Reach:** \*\*\*\*See the 1997 Webster Co GPS survey for complete station description\*\*\*\*

Date Printed July 29, 1999



1999  
Boone County, Iowa  
Iowa North Zone (1401)  
NAD\_83(1996)

Point Number: 89

Northing: 3540060.42(Ft)      Easting: 4772679.58(Ft)

Northing: 1079012.575(M)      Easting: 1454715.646(M)

Elev: 1132.96(Ft) NAVD\_88

Elev: 345.327(M) NAVD\_88      Ellip Ht: 318.459(M)      96C Geoid Ht: -26.868(M)

Latitude: 42-12-36.052000 N      Longitude: 94-02-54.242480 W

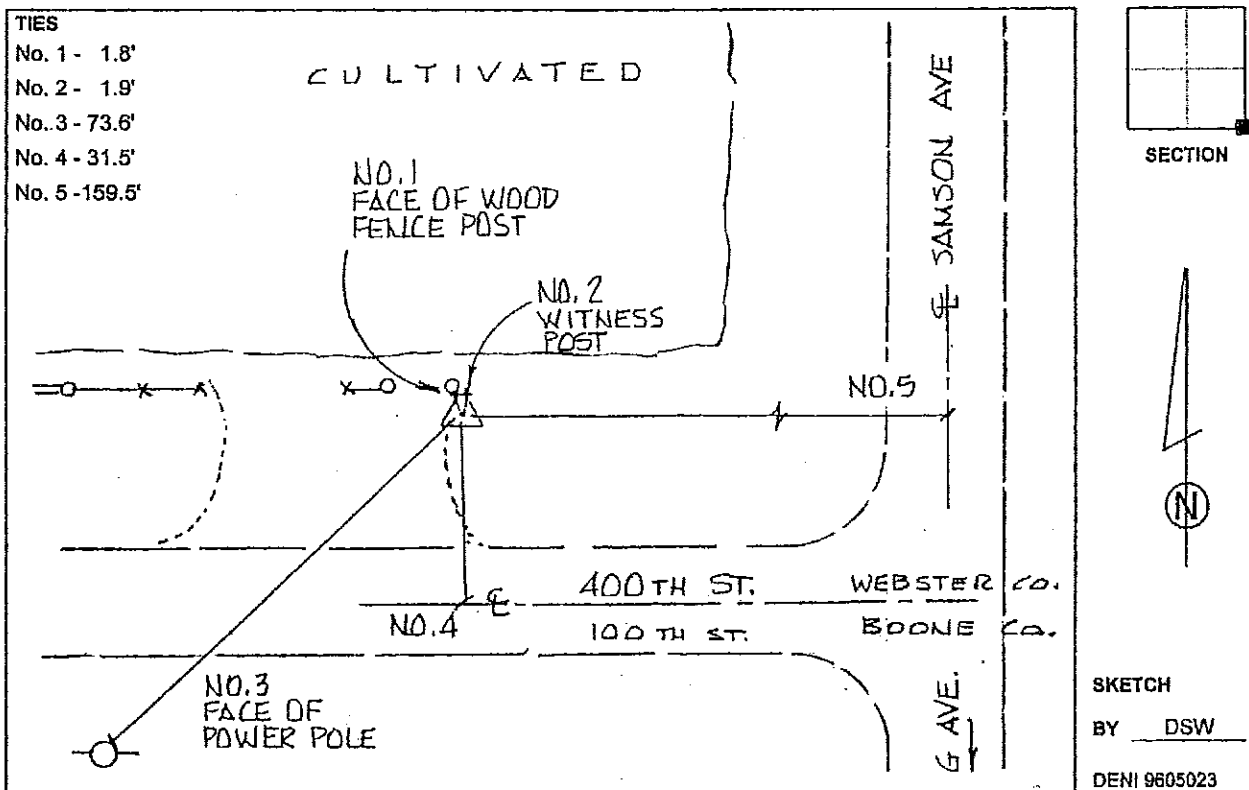
Theta: -0-22-18.03      Combination Factor: 0.99992710

Designation: 6089 WEBSTER CO GPS CONTROL PT

**Monument Type:** BERNTSEN top security rod with a 3-1/4" dia aluminum cap set inside access cover

**To Reach:** \*\*\*\*\*See the 1997 Webster Co GPS survey for complete station description\*\*\*\*\*

Date Printed July 29, 1999



1999  
Boone County, Iowa  
Iowa North Zone (1401)  
NAD\_83(1996)

Point Number: 90

Northing: 3541862.91(Ft)      Easting: 4788064.15(Ft)

Northing: 1079561.975(M)      Easting: 1459404.871(M)

Elev: 1112.81(Ft) NAVD\_88

Elev: 339.185(M) NAVD\_88      Ellip Ht: 312.273(M)      96C Geoid Ht: -26.912(M)

Latitude: 42-12-54.792920 N      Longitude: 93-59-29.952520 W

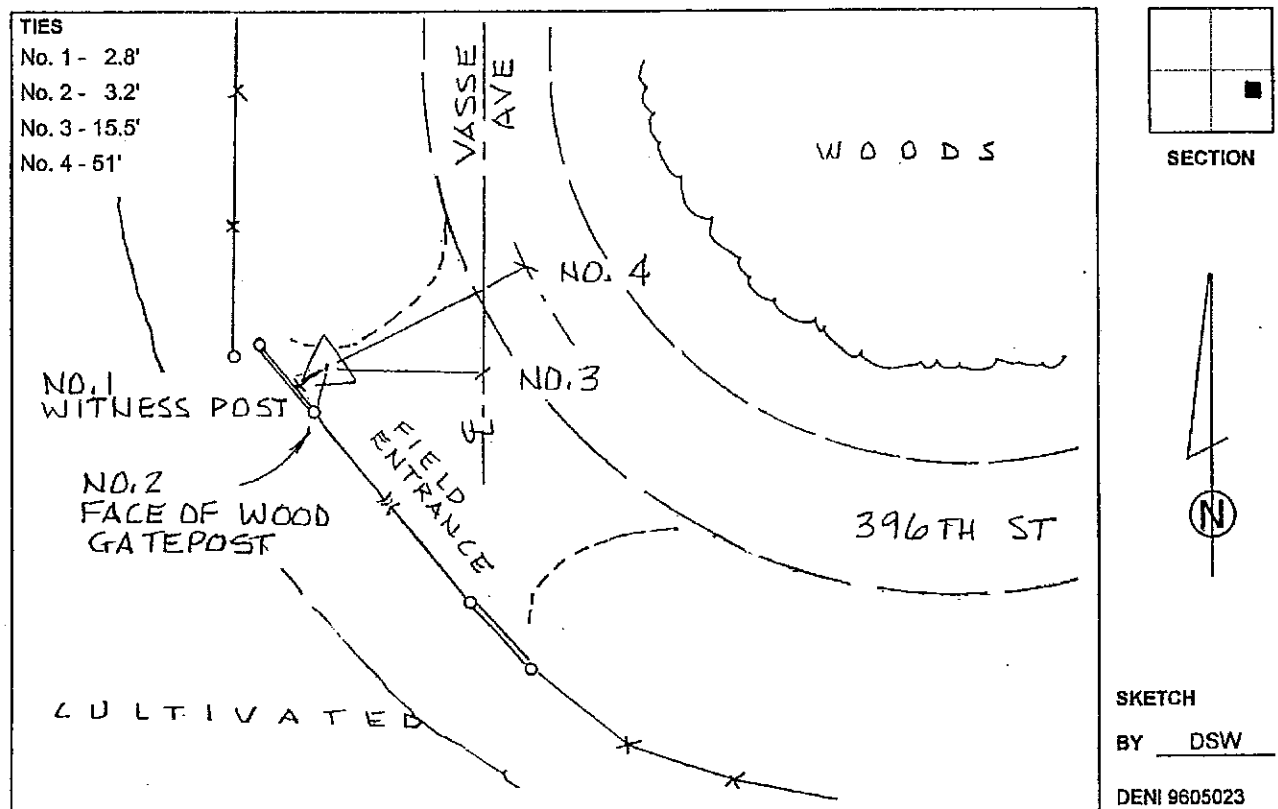
Theta: -0-19-59.58      Combination Factor: 0.99992735

Designation: 6090 WEBSTER CO GPS CONTROL PT

**Monument Type:** BERNTSEN top security rod with a 3-1/4" dia aluminum cap set inside access cover

**To Reach:** \*\*\*\*\*See the 1997 Webster Co GPS survey for complete station description\*\*\*\*\*

Date Printed July 29, 1999



1999  
Boone County, Iowa  
Iowa North Zone (1401)  
NAD\_83(1996)

Point Number: 95

Northing: 3539854.99(Ft)      Easting: 4804269.41(Ft)

Northing: 1078949.958(M)      Easting: 1464344.246(M)

Elev: 1114.66(Ft) NAVD\_88

Elev: 339.750(M) NAVD\_88      Ellip Ht: 312.755(M)      96C Geoid Ht: -26.995(M)

Latitude: 42-12-35.831740 N      Longitude: 93-55-54.462900 W

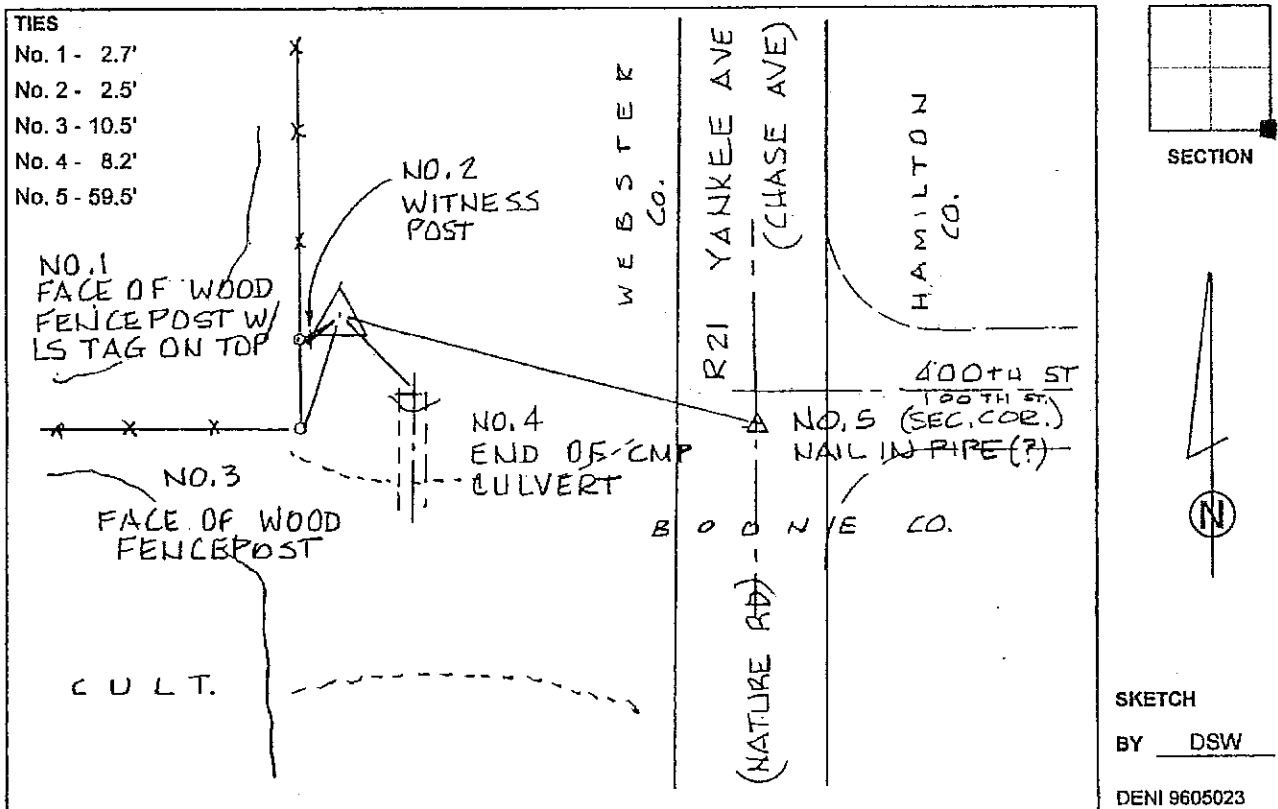
Theta: -0-17-33.53      Combination Factor: 0.99992800

Designation: 6095 WEBSTER CO GPS CONTROL PT

**Monument Type:** BERNTSEN top security rod with a 3-1/4" dia aluminum cap set inside access cover

**To Reach:** \*\*\*\*\*See the 1997 Webster Co GPS survey for complete station description\*\*\*\*\*

Date Printed July 29, 1999





1999  
Boone County, Iowa  
Iowa North Zone (1401)  
NAD\_83(1996)

Point Number: 201

Northing: 3496887.15(Ft)      Easting: 4867416.76(Ft)

Northing: 1065853.334(M)      Easting: 1483591.595(M)

Elev: 984.34(Ft) NAVD\_88

Elev: 300.028(M) NAVD\_88      Ellip Ht: 271.675(M)      96C Geoid Ht: -28.354(M)

Latitude: 42-05-33.689280 N      Longitude: 93-41-54.012920 W

Theta: -0-08-03.92      Combination Factor: 0.99995275

Designation: 7-84-24

**Monument Type:** 3/4" aluminum rod with Story County aluminum cap set flush with ground.

**To Reach:** \*\*\*\*See the 1988 Story Co GPS survey for complete station description\*\*\*\*

Date Printed July 29, 1999

NE COR. SEC. 12-34-24

1999  
Boone County, Iowa  
Iowa North Zone (1401)  
NAD\_83(1996)

Point Number: 501

Northing: 3518482.39(Ft)      Easting: 4867358.83(Ft)

Northing: 1072435.577(M)      Easting: 1483573.938(M)

Elev: 1002.01(Ft) NAVD\_88

Elev: 305.413(M) NAVD\_88      Ellip Ht: 277.453(M)      96C Geoid Ht: -27.960(M)

Latitude: 42-09-07.022130 N      Longitude: 93-41-55.454600 W

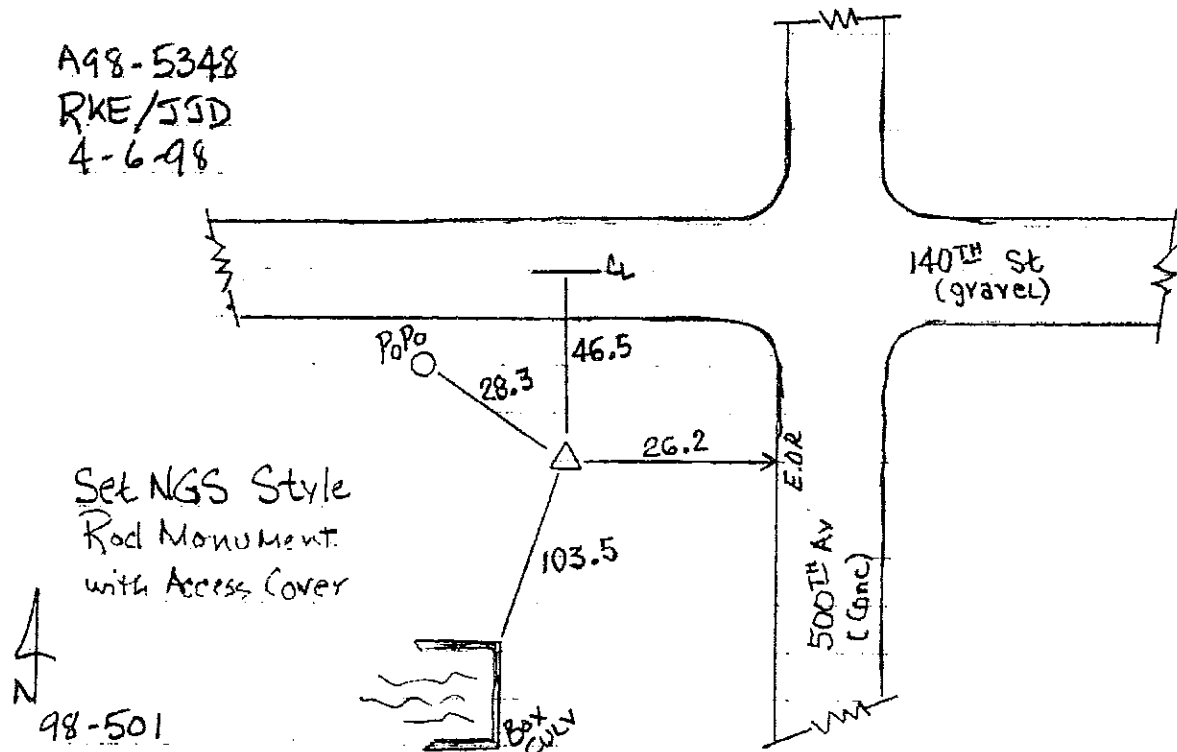
Theta: -0-08-04.90      Combination Factor: 0.99994207

Designation: 98-501 STORY CO GPS CONTROL PT

**Monument Type:** 5/8" dia driven aluminum rod with a 2-1/2" dia aluminum cap and permanent magnet encased in a 5" dia PVC pipe with an aluminum access cover.

**To Reach:** \*\*\*\*See the 1998 Story Co GPS survey for complete station description\*\*\*\*

Date Printed July 29, 1999



1999  
Boone County, Iowa  
Iowa North Zone (1401)  
NAD\_83(1996)

Point Number: 506

Northing: 3475845.09(Ft)      Easting: 4867313.17(Ft)

Northing: 1059439.703(M)      Easting: 1483560.022(M)

Elev: 1004.76(Ft) NAVD\_88

Elev: 306.252(M) NAVD\_88      Ellip Ht: 277.458(M)      96C Geoid Ht: -28.794(M)

Latitude: 42-02-05.817480 N      Longitude: 93-41-54.731400 W

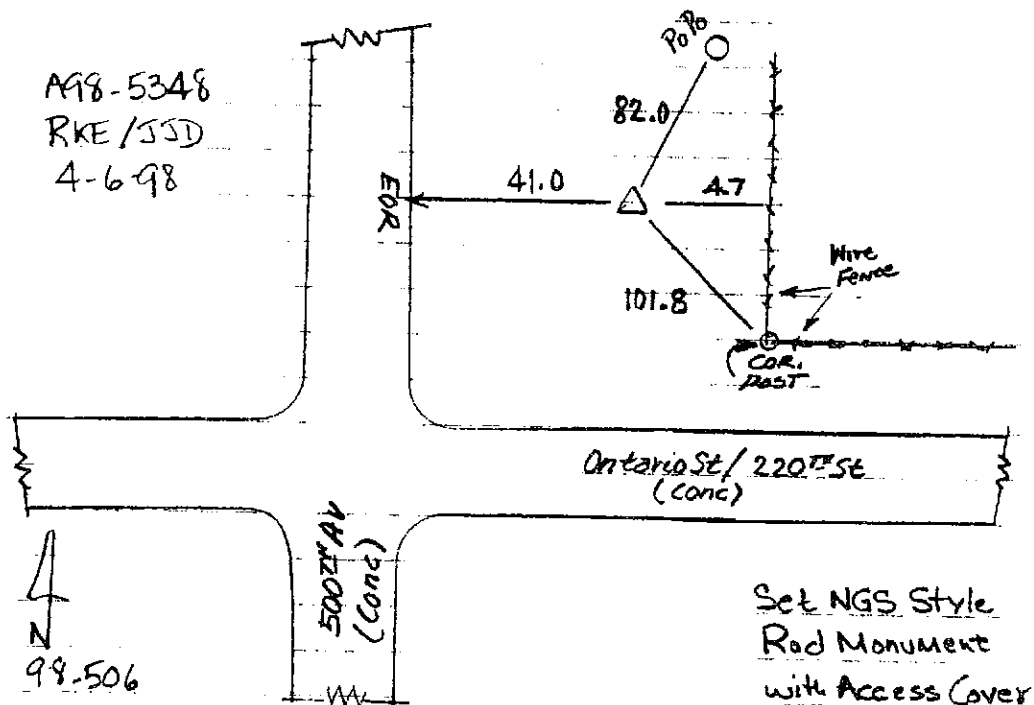
Theta: -0-08-04.41      Combination Factor: 0.99996237

Designation: 98-506 STORY CO GPS CONTROL PT

**Monument Type:** 5/8" dia driven aluminum rod with a 2-1/2" dia aluminum cap and permanent magnet encased in a 5" dia PVC pipe with an aluminum access cover.

**To Reach:** \*\*\*\*See the 1998 Story Co GPS survey for complete station description\*\*\*\*

Date Printed July 29, 1999



1999  
Boone County, Iowa  
Iowa North Zone (1401)  
NAD\_83(1996)

Point Number: 511

Northing: 3434568.56(Ft)      Easting: 4867360.03(Ft)

Northing: 1046858.591(M)      Easting: 1483574.303(M)

Elev: 1039.11(Ft) NAVD\_88

Elev: 316.722(M) NAVD\_88      Ellip Ht: 286.998(M)      96C Geoid Ht: -29.724(M)

Latitude: 41-55-18.058360 N      Longitude: 93-41-52.829400 W

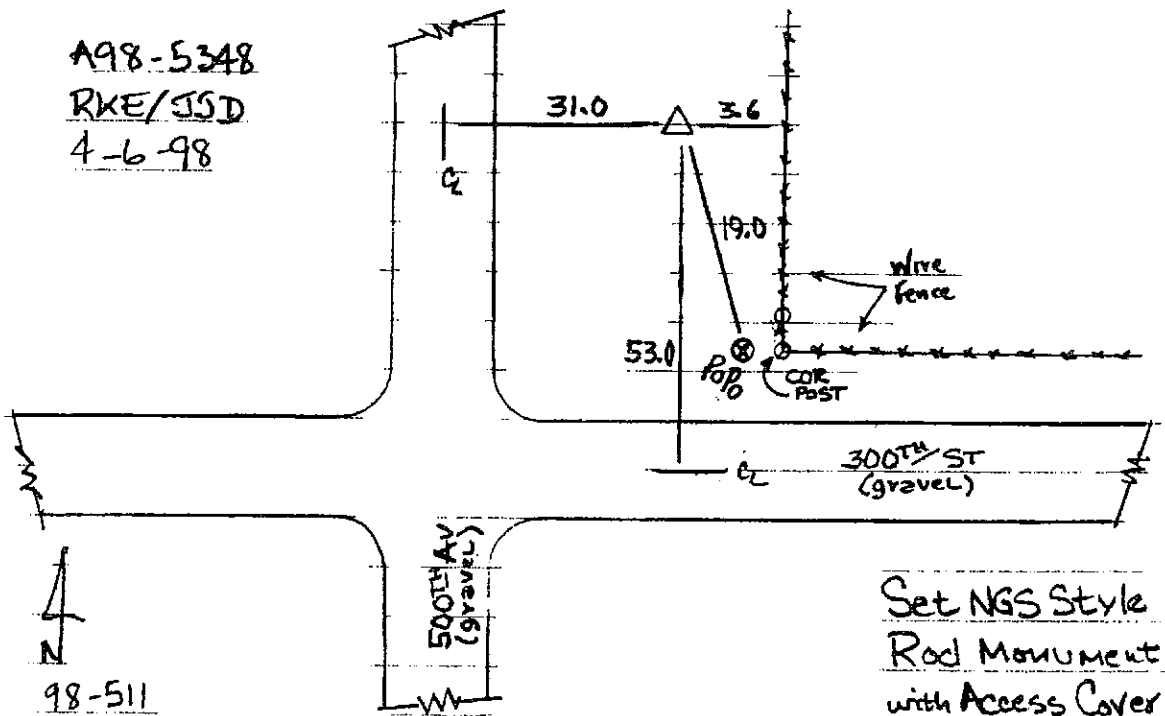
Theta: -0-08-03.12      Combination Factor: 0.99998444

Designation: 98-511 STORY CO GPS CONTROL PT

**Monument Type:** 5/8" dia driven aluminum rod with a 2-1/2" dia aluminum cap and permanent magnet encased in a 5" dia PVC pipe with an aluminum access cover.

**To Reach:** \*\*\*\*See the 1998 Story Co GPS survey for complete station description\*\*\*\*

Date Printed July 29, 1999



1999  
Boone County, Iowa  
Iowa North Zone (1401)  
NAD\_83(1996)

Point Number: 1

Northing: 3416561.78(Ft)      Easting: 4740273.49(Ft)

Northing: 1041370.114(M)      Easting: 1444838.251(M)

Elev: 1014.75(Ft) NAVD\_88

Elev: 309.296(M) NAVD\_88      Ellip Ht: 281.274(M)      96C Geoid Ht: -28.022(M)

Latitude: 41-52-13.771999 N      Longitude: 94-09-51.949043 W

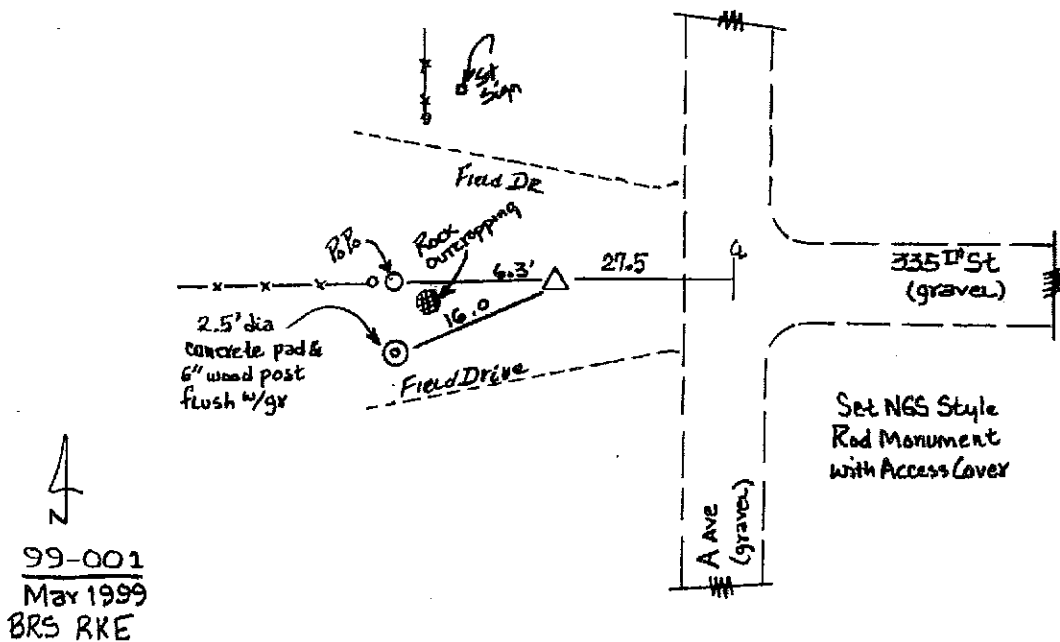
Theta: -0-27-01.13      Combination Factor: 0.99999725

Designation: 99-001 BOONE CO GPS CONTROL PT

**Monument Type:** 5/8" dia driven aluminum rod with a 2-1/2" dia aluminum cap and permanent magnet encased in a 5" dia PVC pipe with an aluminum access cover.

**To Reach:** 28ft W of A Av, on CL of 335 St to E. Near the E 1/4 cor of Sec 36 T82N R29W.

Date Printed July 29, 1999



1999  
Boone County, Iowa  
Iowa North Zone (1401)  
NAD\_83(1996)

Point Number: 2

Northing: 3413985.63(Ft)      Easting: 4756087.72(Ft)

Northing: 1040584.901(M)      Easting: 1449658.436(M)

Elev: 995.65(Ft) NAVD\_88

Elev: 303.474(M) NAVD\_88      Ellip Ht: 275.146(M)      96C Geoid Ht: -28.328(M)

Latitude: 41-51-49.497749 N      Longitude: 94-06-22.697284 W

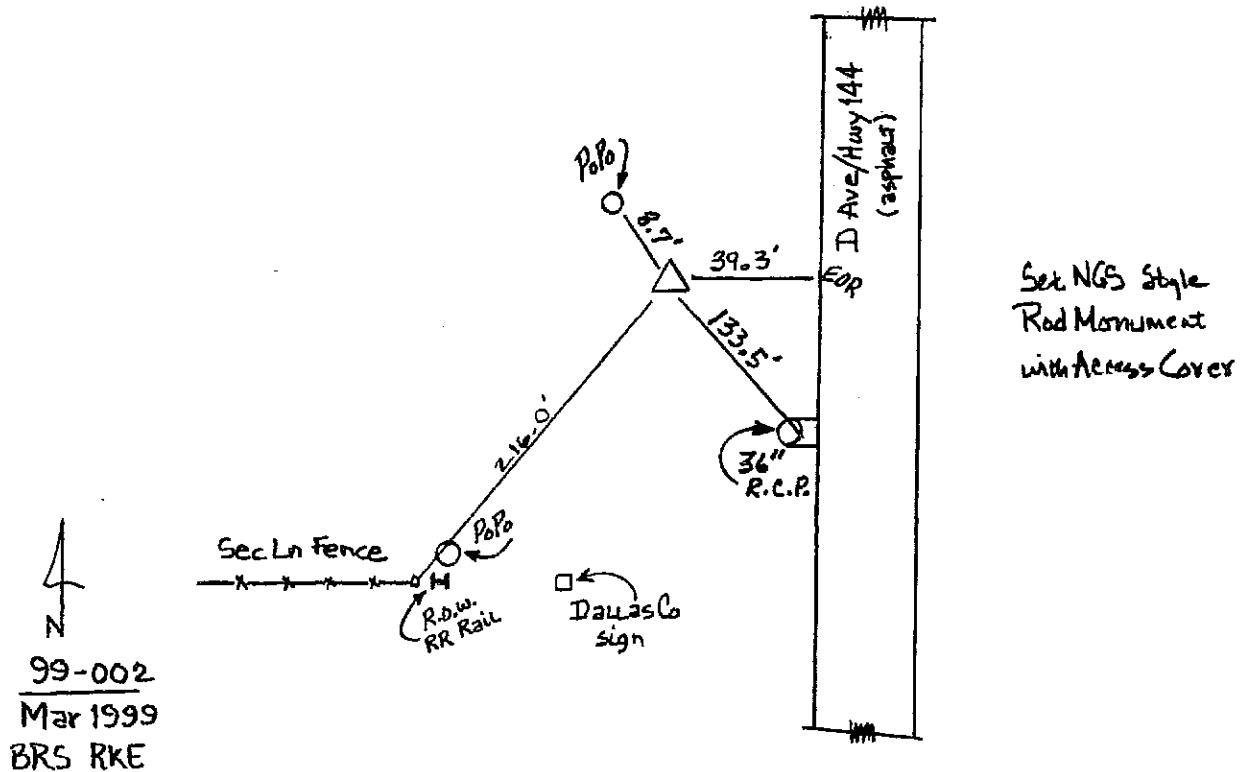
Theta: -0-24-39.31      Combination Factor: 0.99999984

Designation: 99-002 BOONE CO GPS CONTROL PT

**Monument Type:** 5/8" dia driven aluminum rod with a 2-1/2" dia aluminum cap and permanent magnet encased in a 5" dia PVC pipe with an aluminum access cover.

**To Reach:** 40ft W of D Av, 200ft N of Sec line. Near the SE cor of Sec 33 T82N R28W.

Date Printed July 29, 1999



1999  
Boone County, Iowa  
Iowa North Zone (1401)  
NAD\_83(1996)

Point Number: 3

Northing: 3413683.68(Ft)      Easting: 4771931.78(Ft)

Northing: 1040492.866(M)      Easting: 1454487.716(M)

Elev: 962.82(Ft) NAVD\_88

Elev: 293.467(M) NAVD\_88      Ellip Ht: 264.859(M)      96C Geoid Ht: -28.608(M)

Latitude: 41-51-47.583612 N      Longitude: 94-02-53.290849 W

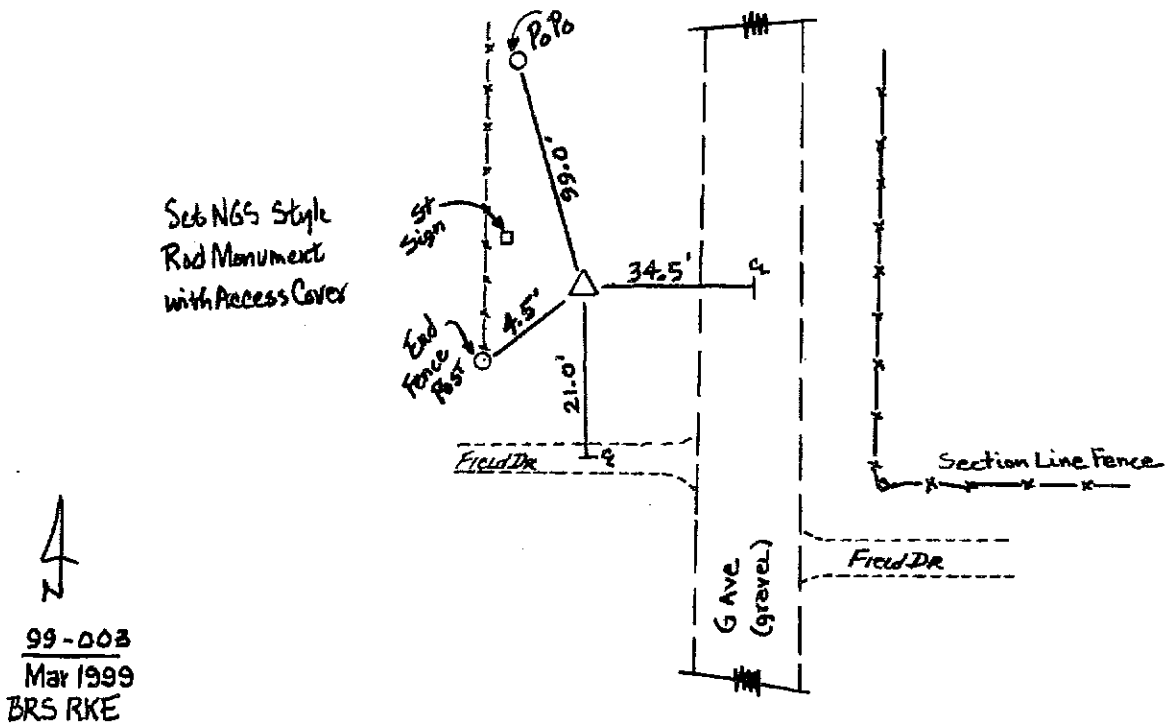
Theta: -0-22-17.39      Combination Factor: 1.00000158

Designation: 99-003 BOONE CO GPS CONTROL PT

**Monument Type:** 5/8" dia driven aluminum rod with a 2-1/2" dia aluminum cap and permanent magnet encased in a 5" dia PVC pipe with an aluminum access cover.

**To Reach:** 35ft W of G Av, on N edge of field ent, 30ft N of Sec line to W. Near the SE cor of Sec 36 T82N R28W.

Date Printed July 29, 1999



1999  
Boone County, Iowa  
Iowa North Zone (1401)  
NAD\_83(1996)

Point Number: 4

Northing: 3416159.32(Ft)      Easting: 4788184.25(Ft)

Northing: 1041247.444(M)      Easting: 1459441.477(M)

Elev: 966.44(Ft) NAVD\_88

Elev: 294.573(M) NAVD\_88      Ellip Ht: 265.742(M)      96C Geoid Ht: -28.830(M)

Latitude: 41-52-13.023717 N      Longitude: 93-59-18.703125 W

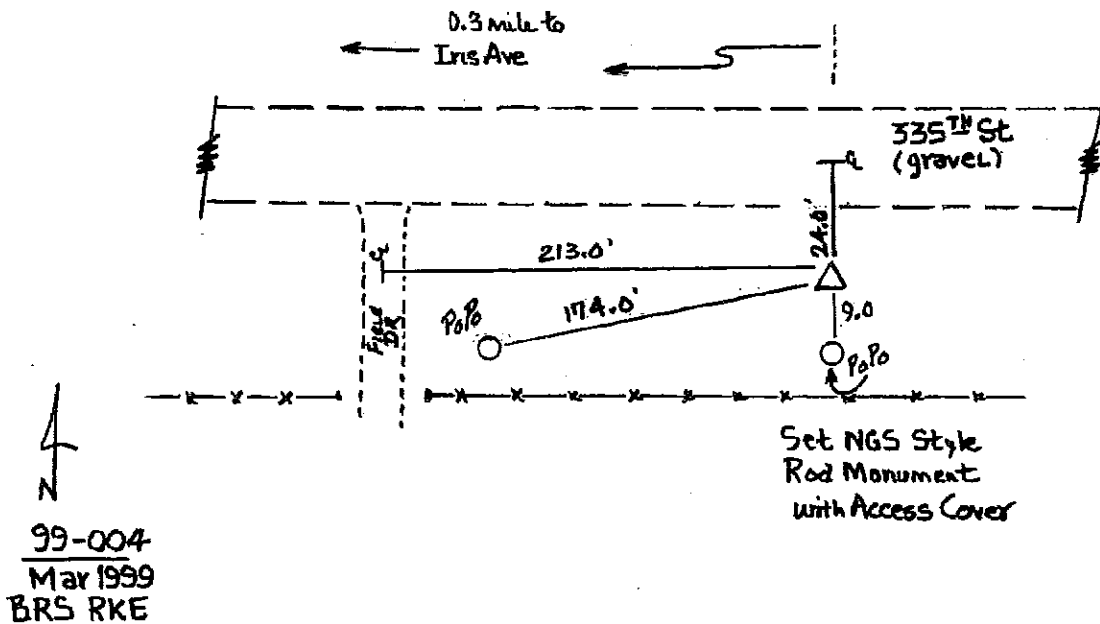
Theta: -0-19-51.95      Combination Factor: 0.99999974

Designation: 99-004 BOONE CO GPS CONTROL PT

**Monument Type:** 5/8" dia driven aluminum rod with a 2-1/2" dia aluminum cap and permanent magnet encased in a 5" dia PVC pipe with an aluminum access cover.

**To Reach:** 25ft S of 335 St, 200ft W of Sec line. Near the E 1/4 cor of Sec 33 T82N R27W.

Date Printed July 29, 1999





1999  
Boone County, Iowa  
Iowa North Zone (1401)  
NAD\_83(1996)

Point Number: 5

Northing: 3413546.87(Ft)      Easting: 4803849.43(Ft)

Northing: 1040451.168(M)      Easting: 1464216.236(M)

Elev: 1063.37(Ft) NAVD\_88

Elev: 324.116(M) NAVD\_88      Ellip Ht: 294.973(M)      96C Geoid Ht: -29.142(M)

Latitude: 41-51-48.058042 N      Longitude: 93-55-51.487349 W

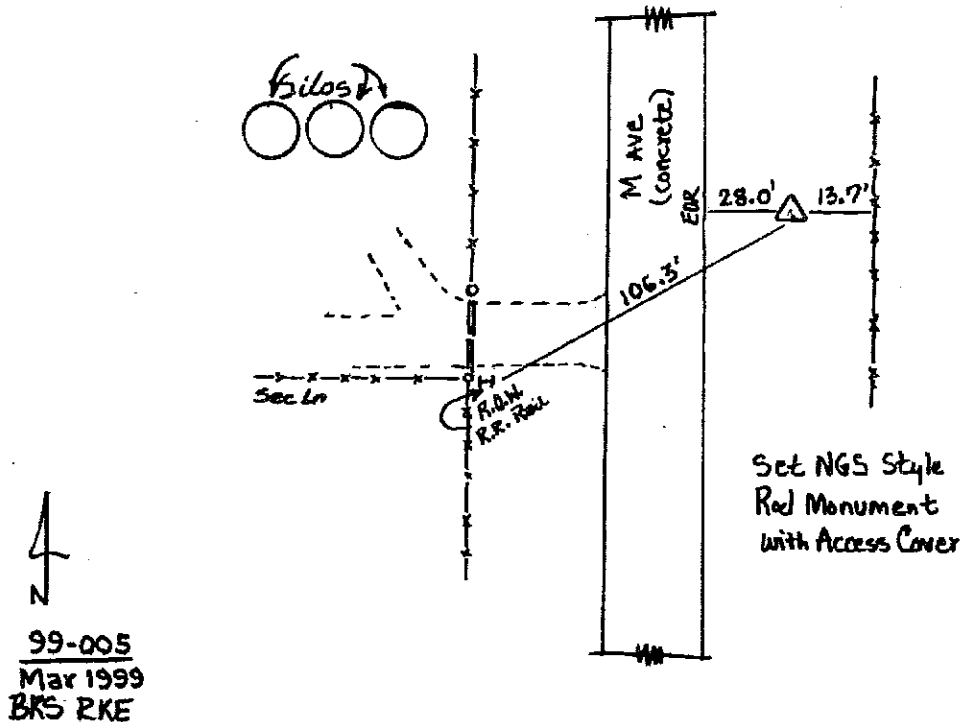
Theta: -0-17-31.51      Combination Factor: 0.99999682

Designation: 99-005 BOONE CO GPS CONTROL PT

**Monument Type:** 5/8" dia driven aluminum rod with a 2-1/2" dia aluminum cap and permanent magnet encased in a 5" dia PVC pipe with an aluminum access cover.

**To Reach:** 28ft E of M Av, 60ft N of Sec line. Near the SW cor of Sec 31 T82N R26W.

Date Printed July 29, 1999



1999  
Boone County, Iowa  
Iowa North Zone (1401)  
NAD\_83(1996)

Point Number: 6

Northing: 3416151.56(Ft)      Easting: 4819312.80(Ft)

Northing: 1041245.079(M)      Easting: 1468929.478(M)

Elev: 900.29(Ft) NAVD\_88

Elev: 274.410(M) NAVD\_88      Ellip Ht: 245.064(M)      96C Geoid Ht: -29.345(M)

Latitude: 41-52-14.516234 N      Longitude: 93-52-27.289145 W

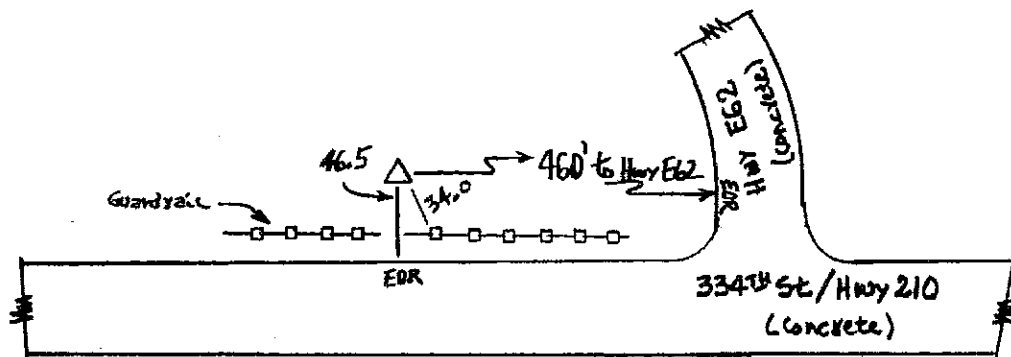
Theta: -0-15-13.12      Combination Factor: 1.00000288

Designation: 99-006 BOONE CO GPS CONTROL PT

**Monument Type:** 5/8" dia driven aluminum rod with a 2-1/2" dia aluminum cap and permanent magnet encased in a 5" dia PVC pipe with an aluminum access cover.

**To Reach:** 46ft N of 334 RD(Hwy 210), near the Sec line. Near the E 1/4 cor of Sec 33 T82N R26W.

Date Printed July 29, 1999



Set NGS Style  
Rod Monument  
with Access Cover

N  
99-006  
Mar 1999  
BRS RKE

1999  
Boone County, Iowa  
Iowa North Zone (1401)  
NAD\_83(1996)

Point Number: 7

Northing: 3413441.28(Ft)      Easting: 4835212.10(Ft)

Northing: 1040418.982(M)      Easting: 1473775.594(M)

Elev: 1032.72(Ft) NAVD\_88

Elev: 314.773(M) NAVD\_88      Ellip Ht: 285.118(M)      96C Geoid Ht: -29.655(M)

Latitude: 41-51-48.383375 N      Longitude: 93-48-57.018722 W

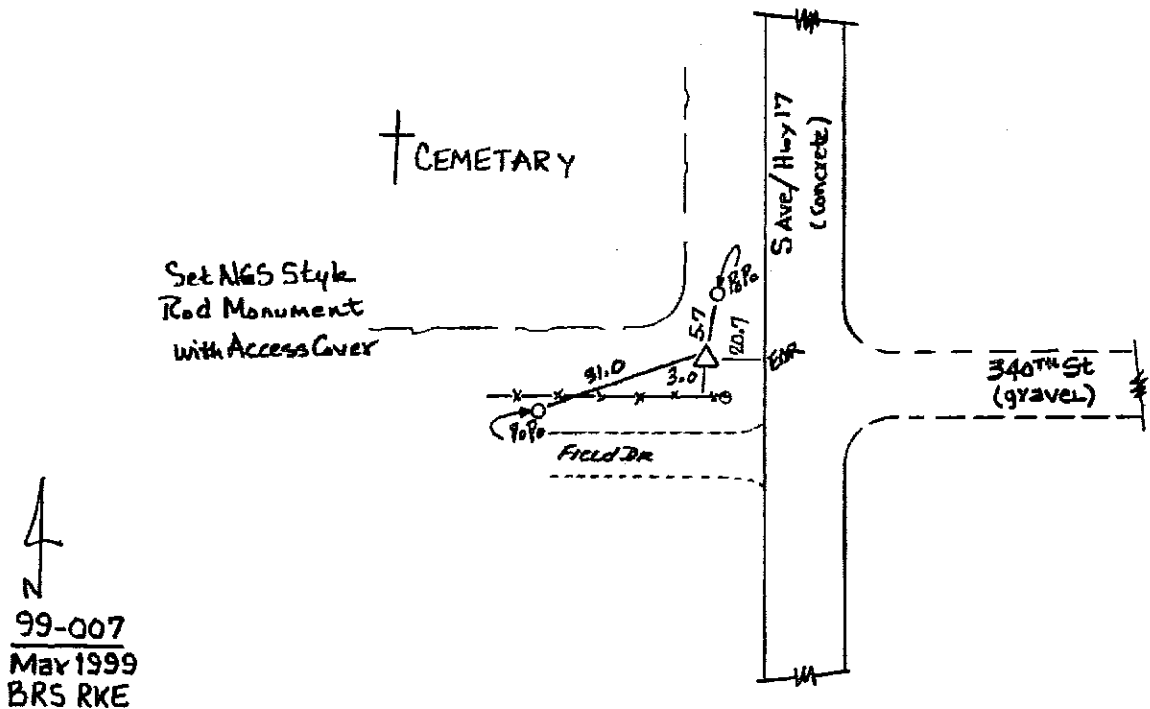
Theta: -0-12-50.61      Combination Factor: 0.99999835

Designation: 99-007 BOONE CO GPS CONTROL PT

**Monument Type:** 5/8" dia driven aluminum rod with a 2-1/2" dia aluminum cap and permanent magnet encased in a 5" dia PVC pipe with an aluminum access cover.

**To Reach:** 20ft W of S Av(Hwy 17), on fence line to W. Near the SE cor of Sec 36 T82N R26W.

Date Printed July 29, 1999



1999  
Boone County, Iowa  
Iowa North Zone (1401)  
NAD\_83(1996)

Point Number: 8

Northing: 3413335.58(Ft)      Easting: 4851295.49(Ft)

Northing: 1040386.767(M)      Easting: 1478677.824(M)

Elev: 970.45(Ft) NAVD\_88

Elev: 295.794(M) NAVD\_88      Ellip Ht: 265.894(M)      96C Geoid Ht: -29.900(M)

Latitude: 41-51-47.877375 N      Longitude: 93-45-24.468646 W

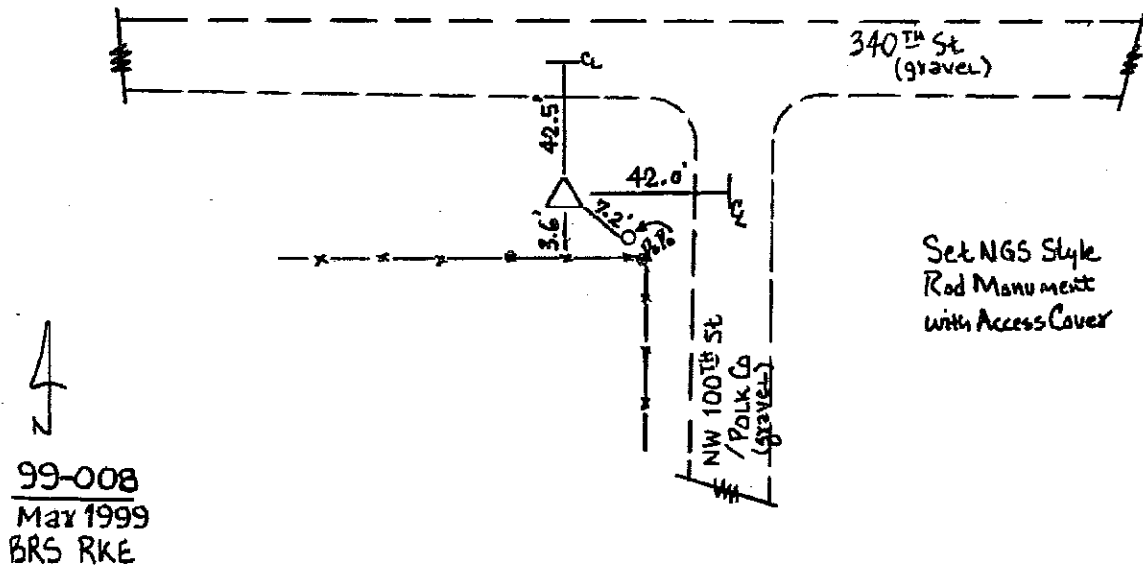
Theta: -0-10-26.55      Combination Factor: 1.00000140

Designation: 99-008 BOONE CO GPS CONTROL PT

**Monument Type:** 5/8" dia driven aluminum rod with a 2-1/2" dia aluminum cap and permanent magnet encased in a 5" dia PVC pipe with an aluminum access cover.

**To Reach:** 42ft S of 340 St, 42ft W of NW 100 St to the S. Near the NE cor of Sec 4 T81N R25W.

Date Printed July 29, 1999



1999  
Boone County, Iowa  
Iowa North Zone (1401)  
NAD\_83(1996)

Point Number: 9

Northing: 3435070.33(Ft)      Easting: 4740430.03(Ft)

Northing: 1047011.532(M)      Easting: 1444885.962(M)

Elev: 1058.87(Ft) NAVD\_88

Elev: 322.744(M) NAVD\_88      Ellip Ht: 295.043(M)      96C Geoid Ht: -27.701(M)

Latitude: 41-55-16.619537 N      Longitude: 94-09-51.802708 W

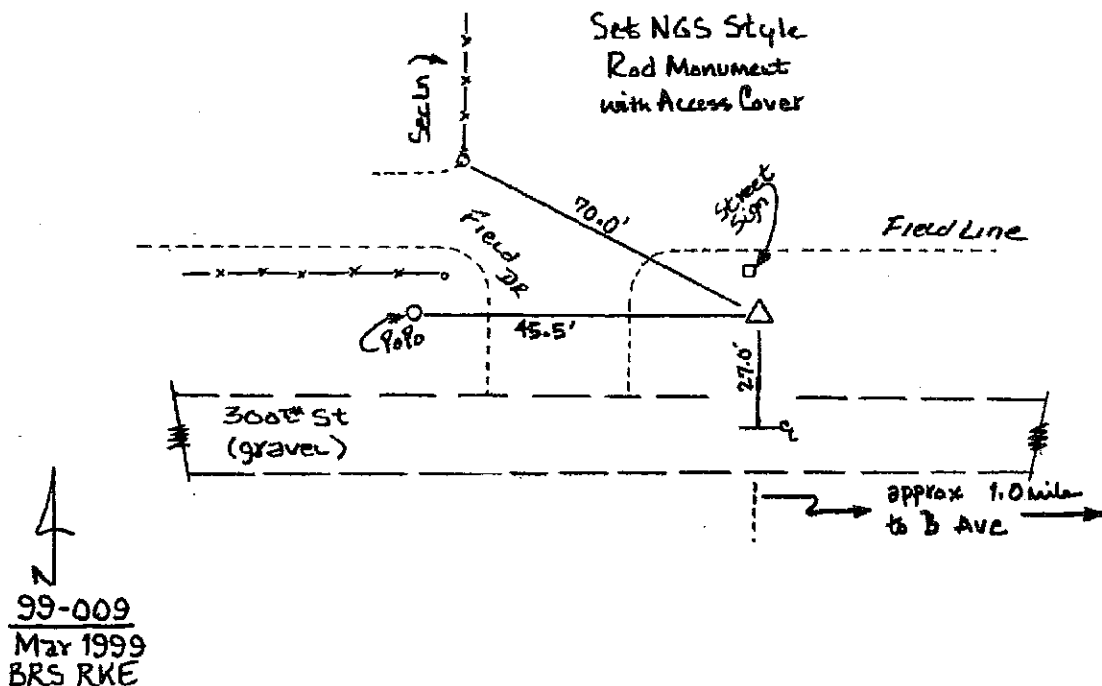
Theta: -0-27-01.03      Combination Factor: 0.99998326

Designation: 99-009 BOONE CO GPS CONTROL PT

**Monument Type:** 5/8" dia driven aluminum rod with a 2-1/2" dia aluminum cap and permanent magnet encased in a 5" dia PVC pipe with an aluminum access cover.

**To Reach:** 27ft N of 300 St, 40ft E of Sec line on E side of field ent to N. Near the SW cor of Sec 7 T82N R28W.

Date Printed July 29, 1999



1999  
Boone County, Iowa  
Iowa North Zone (1401)  
NAD\_83(1996)

Point Number: 10

Northing: 3434745.46(Ft)      Easting: 4772083.51(Ft)

Northing: 1046912.509(M)      Easting: 1454533.962(M)

Elev: 982.21(Ft) NAVD\_88

Elev: 299.378(M) NAVD\_88      Ellip Ht: 271.212(M)      96C Geoid Ht: -28.165(M)

Latitude: 41-55-15.652593 N      Longitude: 94-02-53.090268 W

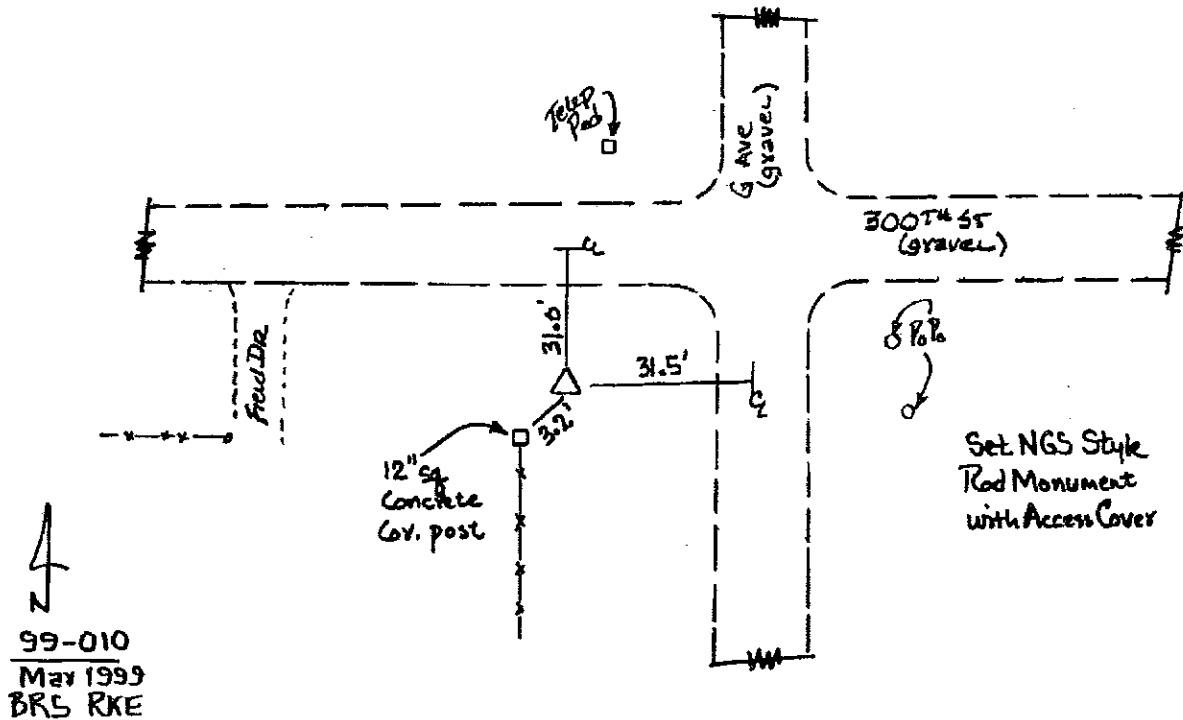
Theta: -0-22-17.25      Combination Factor: 0.99998706

Designation: 99-010 BOONE CO GPS CONTROL PT

**Monument Type:** 5/8" dia driven aluminum rod with a 2-1/2" dia aluminum cap and permanent magnet encased in a 5" dia PVC pipe with an aluminum access cover.

**To Reach:** 32ft W of G Ave, 30ft S of 300 St. Near the NE cor of Sec 13 T82N R28W.

Date Printed July 29, 1999



1999  
Boone County, Iowa  
Iowa North Zone (1401)  
NAD\_83(1996)

Point Number: 11

Northing: 3434800.09(Ft)      Easting: 4803935.77(Ft)

Northing: 1046929.163(M)      Easting: 1464242.550(M)

Elev: 1060.99(Ft) NAVD\_88

Elev: 323.392(M) NAVD\_88      Ellip Ht: 294.718(M)      96C Geoid Ht: -28.673(M)

Latitude: 41-55-18.014516 N      Longitude: 93-55-51.778512 W

Theta: -0-17-31.71      Combination Factor: 0.99998323

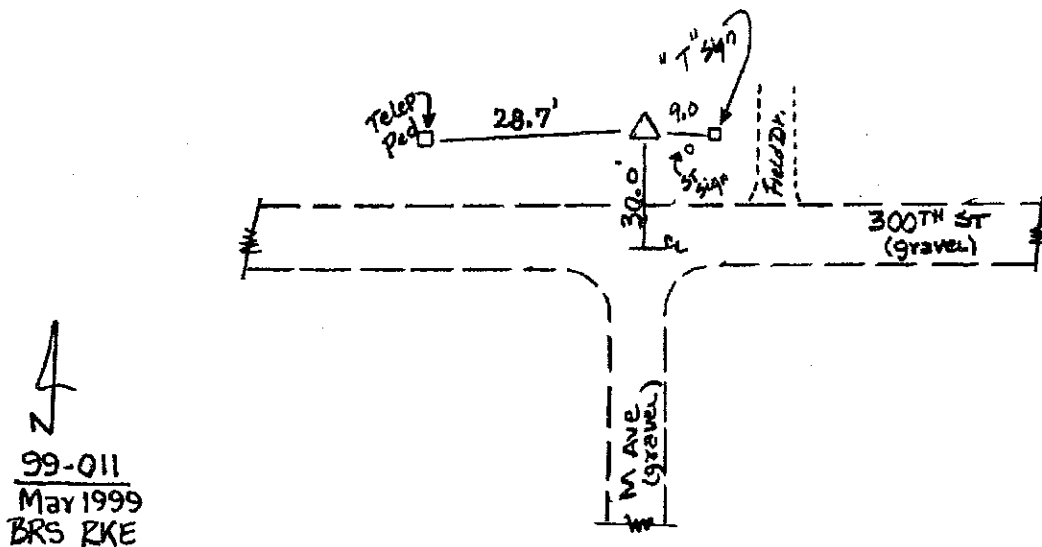
Designation: 99-011 BOONE CO GPS CONTROL PT

**Monument Type:** 5/8" dia driven aluminum rod with a 2-1/2" dia aluminum cap and permanent magnet encased in a 5" dia PVC pipe with an aluminum access cover.

**To Reach:** 30ft N of 300 St, 10ft W of CL of M Av to S. Near the SE cor of Sec 12 T82N R27W.

Date Printed July 29, 1999

Set NGS style  
Rod Monument  
with Access Cover



1999  
Boone County, Iowa  
Iowa North Zone (1401)  
NAD\_83(1996)

Point Number: 12

Northing: 3434592.26(Ft) Easting: 4835290.50(Ft)

Northing: 1046865.815(M) Easting: 1473799.491(M)

Elev: 1060.10(Ft) NAVD\_88

Elev: 323.118(M) NAVD\_88 Ellip Ht: 293.919(M) 96C Geoid Ht: -29.199(M)

Latitude: 41-55-17.329694 N Longitude: 93-48-57.026942 W

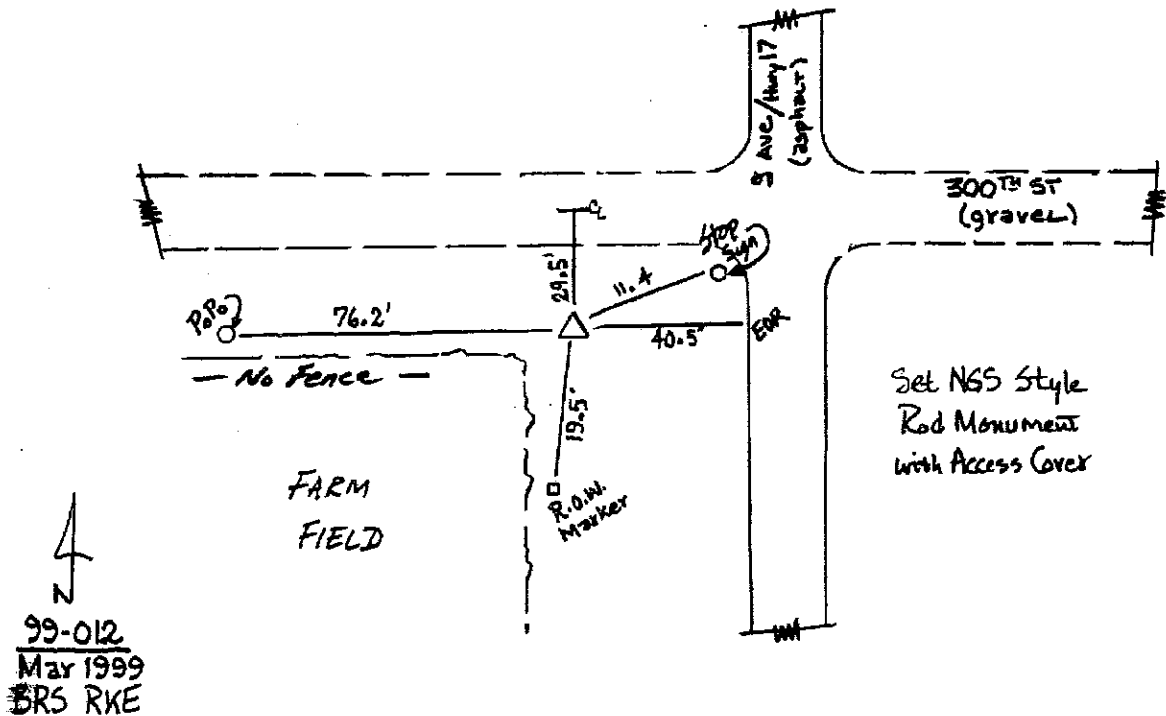
Theta: -0-12-50.61 Combination Factor: 0.99998340

Designation: 99-012 BOONE CO GPS CONTROL PT

**Monument Type:** 5/8" dia driven aluminum rod with a 2-1/2" dia aluminum cap and permanent magnet encased in a 5" dia PVC pipe with an aluminum access cover.

**To Reach:** 30ft S of 300 St, 40ft W of S Av (Hwy 17). Near the NE cor of Sec 13 T82N R26W.

Date Printed July 29, 1999





1999  
Boone County, Iowa  
Iowa North Zone (1401)  
NAD\_83(1996)

Point Number: 13

Northing: 3456114.52(Ft)      Easting: 4740566.18(Ft)

Northing: 1053425.812(M)      Easting: 1444927.461(M)

Elev: 1038.95(Ft) NAVD\_88

Elev: 316.672(M) NAVD\_88      Ellip Ht: 289.295(M)      96C Geoid Ht: -27.376(M)

Latitude: 41-58-44.514111 N      Longitude: 94-09-52.189799 W

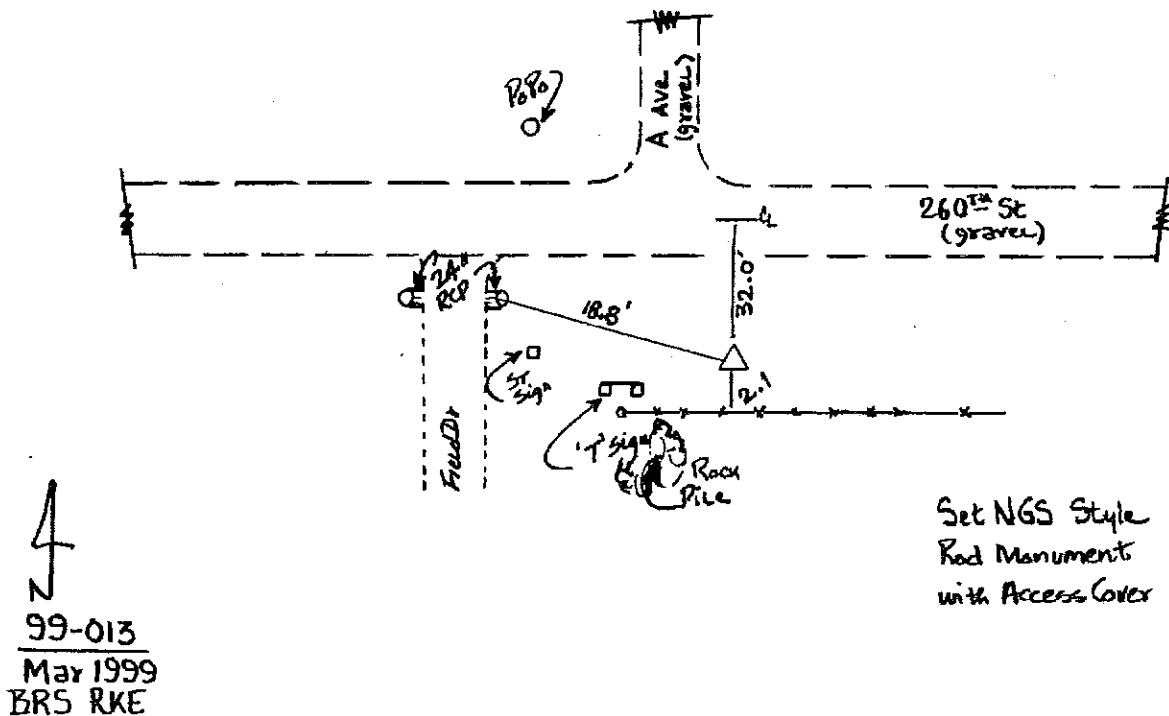
Theta: -0-27-01.29      Combination Factor: 0.99997166

Designation: 99-013 BOONE CO GPS CONTROL PT

**Monument Type:** 5/8" dia driven aluminum rod with a 2-1/2" dia aluminum cap and permanent magnet encased in a 5" dia PVC pipe with an aluminum access cover.

**To Reach:** 32ft S of 260 St, 20ft W of A Av to N. Near the NE cor of Sec 25 T83N R29W.

Date Printed July 29, 1999



1999  
Boone County, Iowa  
Iowa North Zone (1401)  
NAD\_83(1996)

Point Number: 14

Northing: 3456090.83(Ft)      Easting: 4756799.14(Ft)

Northing: 1053418.592(M)      Easting: 1449875.276(M)

Elev: 978.19(Ft) NAVD\_88

Elev: 298.154(M) NAVD\_88      Ellip Ht: 270.604(M)      96C Geoid Ht: -27.550(M)

Latitude: 41-58-45.483985 N      Longitude: 94-06-17.276637 W

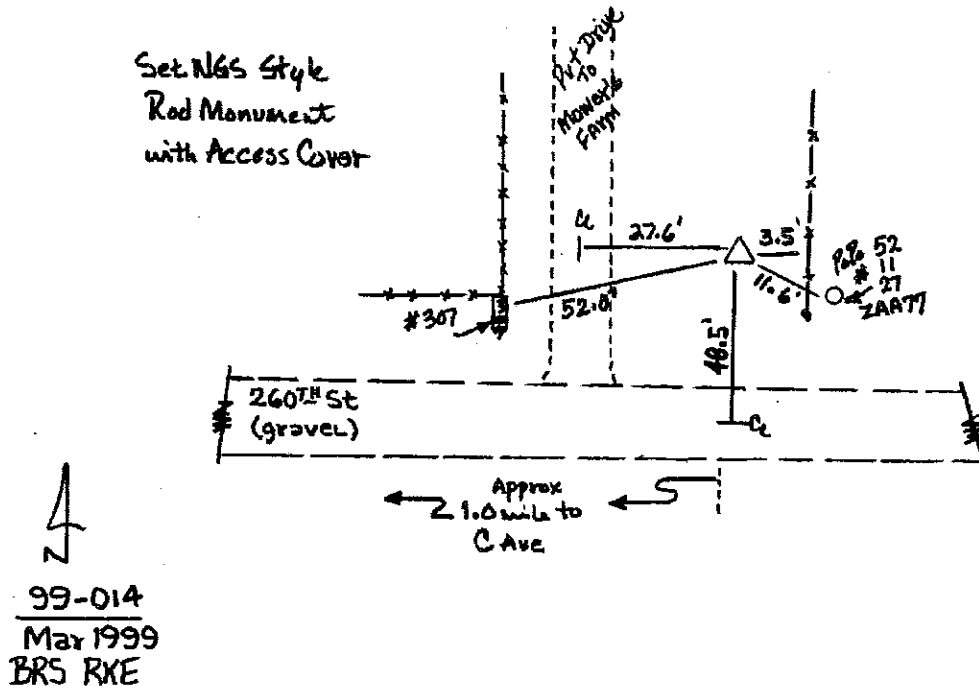
Theta: -0-24-35.64      Combination Factor: 0.99997454

Designation: 99-014 BOONE CO GPS CONTROL PT

**Monument Type:** 5/8" dia driven aluminum rod with a 2-1/2" dia aluminum cap and permanent magnet encased in a 5" dia PVC pipe with an aluminum access cover.

**To Reach:** 48ft N of 260 St, 28ft W of Drive to N 300ft E of sec line. Near the SW cor of Sec 22 T83N R28W.

Date Printed July 29, 1999



1999  
Boone County, Iowa  
Iowa North Zone (1401)  
NAD\_83(1996)

Point Number: 15

Northing: 3455988.34(Ft)      Easting: 4772029.33(Ft)

Northing: 1053387.352(M)      Easting: 1454517.450(M)

Elev: 1050.25(Ft) NAVD\_88

Elev: 320.117(M) NAVD\_88      Ellip Ht: 292.381(M)      96C Geoid Ht: -27.737(M)

Latitude: 41-58-45.497997 N      Longitude: 94-02-55.630839 W

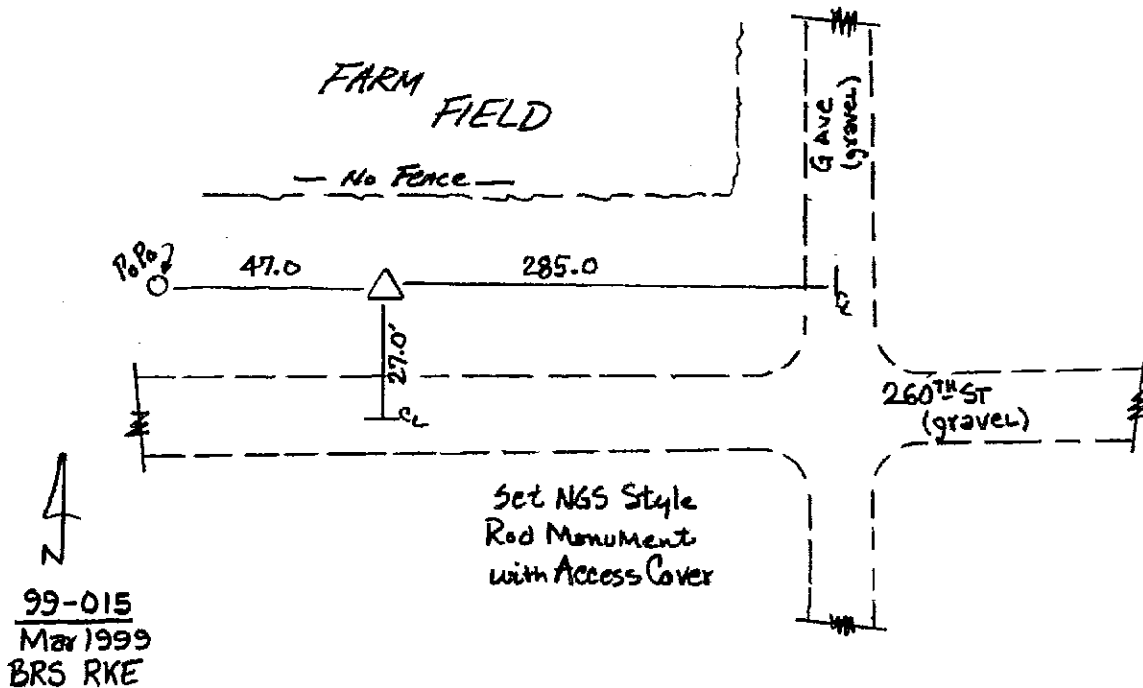
Theta: -0-22-18.97      Combination Factor: 0.99997112

Designation: 99-015 BOONE CO GPS CONTROL PT

**Monument Type:** 5/8" dia driven aluminum rod with a 2-1/2" dia aluminum cap and permanent magnet encased in a 5" dia PVC pipe with an aluminum access cover.

**To Reach:** 28ft N of 260 St, 285ft W of G Av. Near the SE cor of Sec 24 T83N R28W.

Date Printed July 29, 1999



1999  
Boone County, Iowa  
Iowa North Zone (1401)  
NAD\_83(1996)

Point Number: 16

Northing: 3455817.19(Ft)      Easting: 4788204.96(Ft)

Northing: 1053335.187(M)      Easting: 1459447.792(M)

Elev: 1074.49(Ft) NAVD\_88

Elev: 327.507(M) NAVD\_88      Ellip Ht: 299.548(M)      96C Geoid Ht: -27.958(M)

Latitude: 41-58-44.788429 N      Longitude: 93-59-21.462969 W

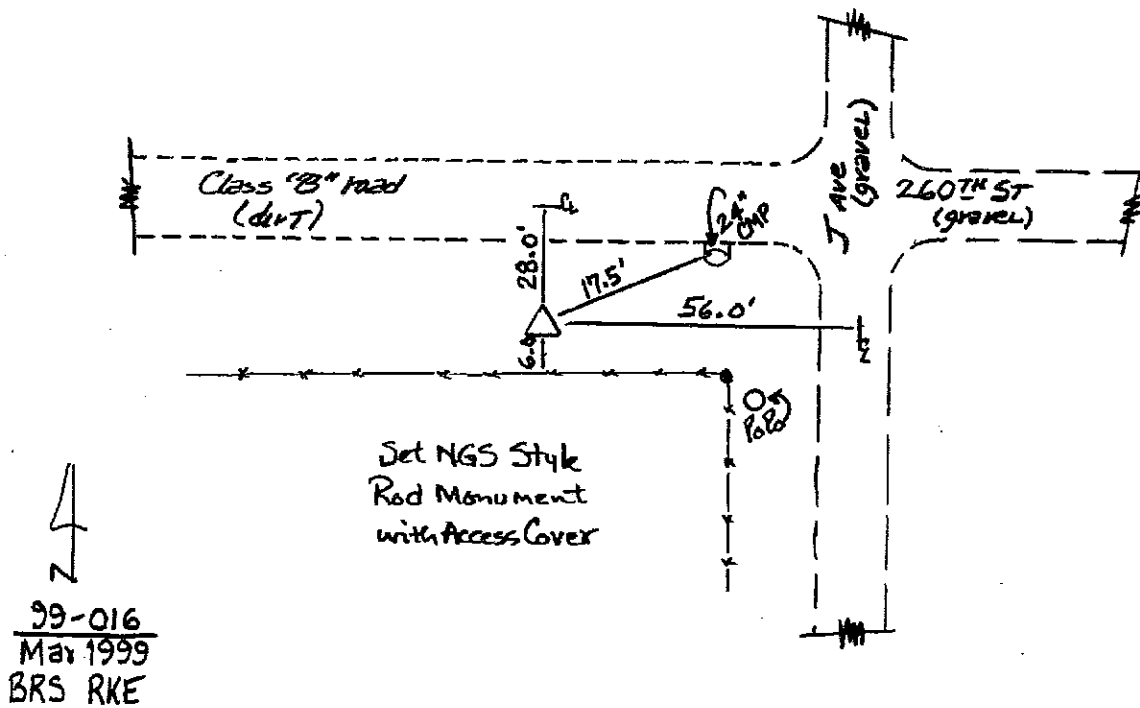
Theta: -0-19-53.82      Combination Factor: 0.99997004

Designation: 99-016 BOONE CO GPS CONTROL PT

**Monument Type:** 5/8" dia driven aluminum rod with a 2-1/2" dia aluminum cap and permanent magnet encased in a 5" dia PVC pipe with an aluminum access cover.

**To Reach:** 28ft S of 260 St, 55ft W of J Av. Near the cor of Sec 28 T83N R27W.

Date Printed July 29, 1999



1999  
Boone County, Iowa  
Iowa North Zone (1401)  
NAD\_83(1996)

Point Number: 17

Northing: 3456290.39(Ft)      Easting: 4805236.53(Ft)

Northing: 1053479.418(M)      Easting: 1464639.025(M)

Elev: 915.71(Ft) NAVD\_88

Elev: 279.110(M) NAVD\_88      Ellip Ht: 250.913(M)      96C Geoid Ht: -28.197(M)

Latitude: 41-58-50.374465 N      Longitude: 93-55-36.007544 W

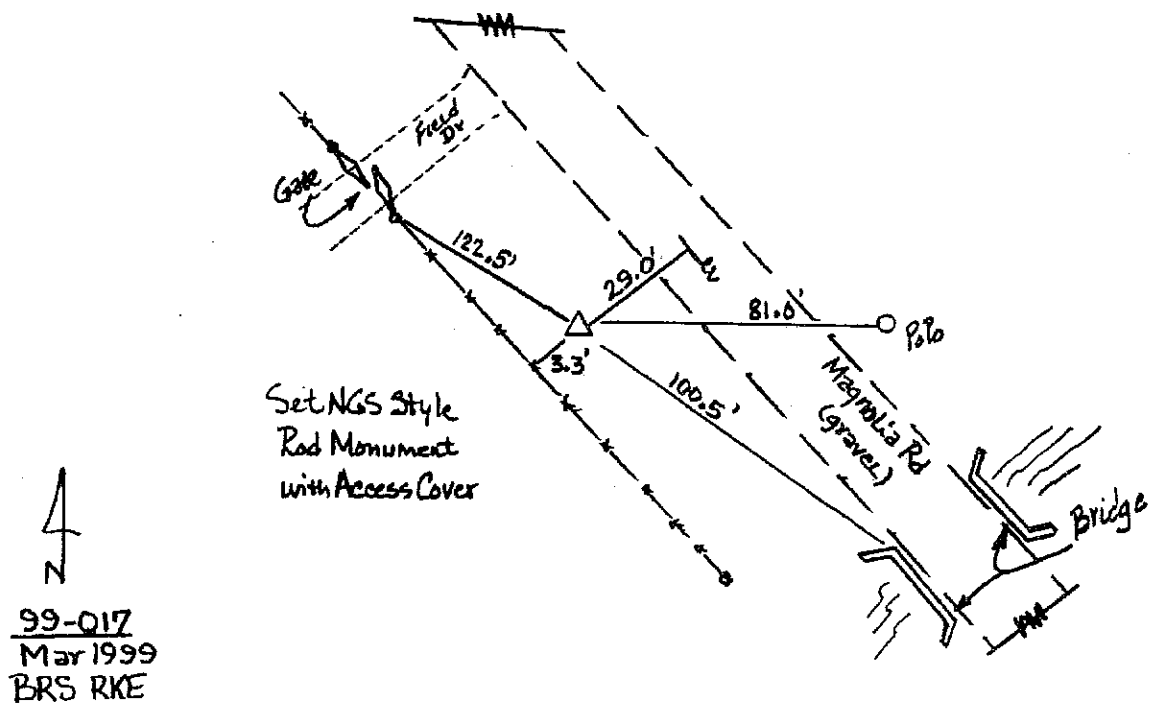
Theta: -0-17-21.02      Combination Factor: 0.99997735

Designation: 99-017 BOONE CO GPS CONTROL PT

**Monument Type:** 5/8" dia driven aluminum rod with a 2-1/2" dia aluminum cap and permanent magnet encased in a 5" dia PVC pipe with an aluminum access cover.

**To Reach:** 30ft SW of Magnolia Rd, 100ft NW of N end of bridge over Bear Creek. In the SW 1/4 of Sec 19 T83N R26W.

Date Printed July 29, 1999



1999  
Boone County, Iowa  
Iowa North Zone (1401)  
NAD\_83(1996)

Point Number: 18

Northing: 3455966.69(Ft)      Easting: 4819571.33(Ft)

Northing: 1053380.753(M)      Easting: 1469008.280(M)

Elev: 1080.25(Ft) NAVD\_88

Elev: 329.259(M) NAVD\_88      Ellip Ht: 300.838(M)      96C Geoid Ht: -28.422(M)

Latitude: 41-58-47.847234 N      Longitude: 93-52-26.199821 W

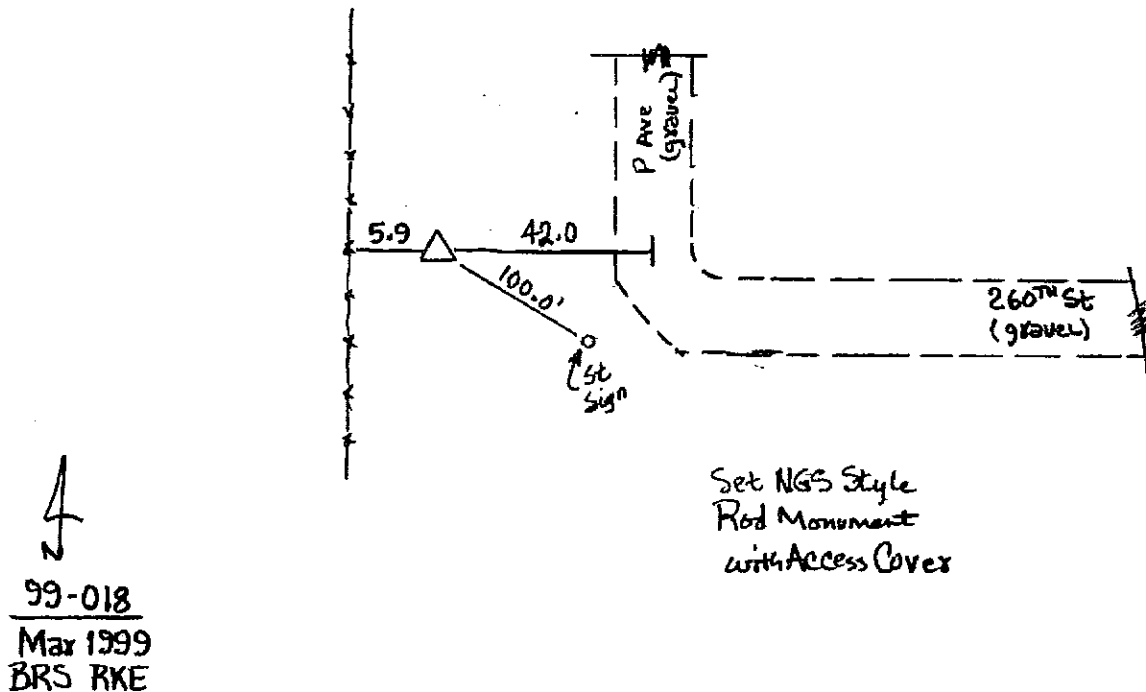
Theta: -0-15-12.38      Combination Factor: 0.99996966

Designation: 99-018 BOONE CO GPS CONTROL PT

**Monument Type:** 5/8" dia driven aluminum rod with a 2-1/2" dia aluminum cap and permanent magnet encased in a 5" dia PVC pipe with an aluminum access cover.

**To Reach:** 42FT W of curve in P Av, 150ft N of 260 St. Near the SE cor of Sec 21 T83N R26W.

Date Printed July 29, 1999



1999  
Boone County, Iowa  
Iowa North Zone (1401)  
NAD\_83(1996)

Point Number: 19

Northing: 3456108.71(Ft)      Easting: 4835425.58(Ft)

Northing: 1053424.042(M)      Easting: 1473840.665(M)

Elev: 1098.00(Ft) NAVD\_88

Elev: 334.672(M) NAVD\_88      Ellip Ht: 306.000(M)      96C Geoid Ht: -28.672(M)

Latitude: 41-58-49.889033 N      Longitude: 93-48-56.302713 W

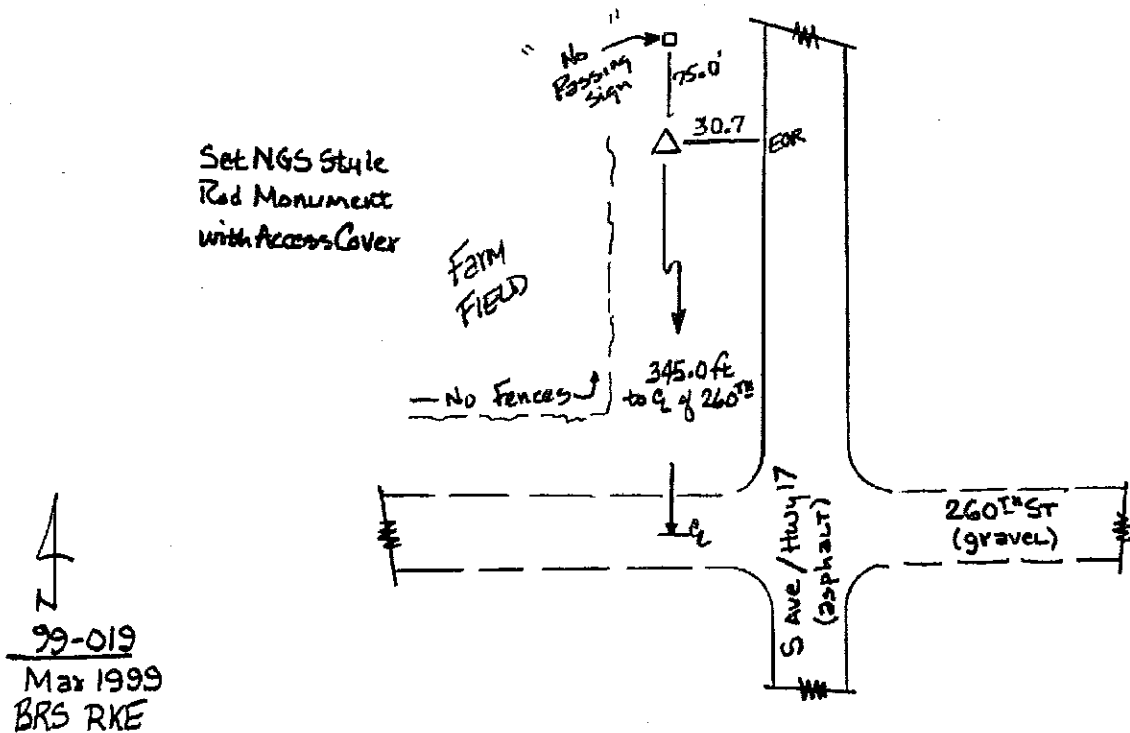
Theta: -0-12-50.12      Combination Factor: 0.99996873

Designation: 99-019 BOONE CO GPS CONTROL PT

**Monument Type:** 5/8" dia driven aluminum rod with a 2-1/2" dia aluminum cap and permanent magnet encased in a 5" dia PVC pipe with an aluminum access cover.

**To Reach:** 30ft W of Hwy 17, 345ft N of 260 St. Near the SE cor of Sec 24 T83N R26W.

Date Printed July 29, 1999



1999  
Boone County, Iowa  
Iowa North Zone (1401)  
NAD\_83(1996)

Point Number: 20

Northing: 3455808.02(Ft)      Easting: 4851400.84(Ft)

Northing: 1053332.391(M)      Easting: 1478709.935(M)

Elev: 1062.51(Ft) NAVD\_88

Elev: 323.853(M) NAVD\_88      Ellip Ht: 294.894(M)      96C Geoid Ht: -28.959(M)

Latitude: 41-58-47.452967 N      Longitude: 93-45-24.781949 W

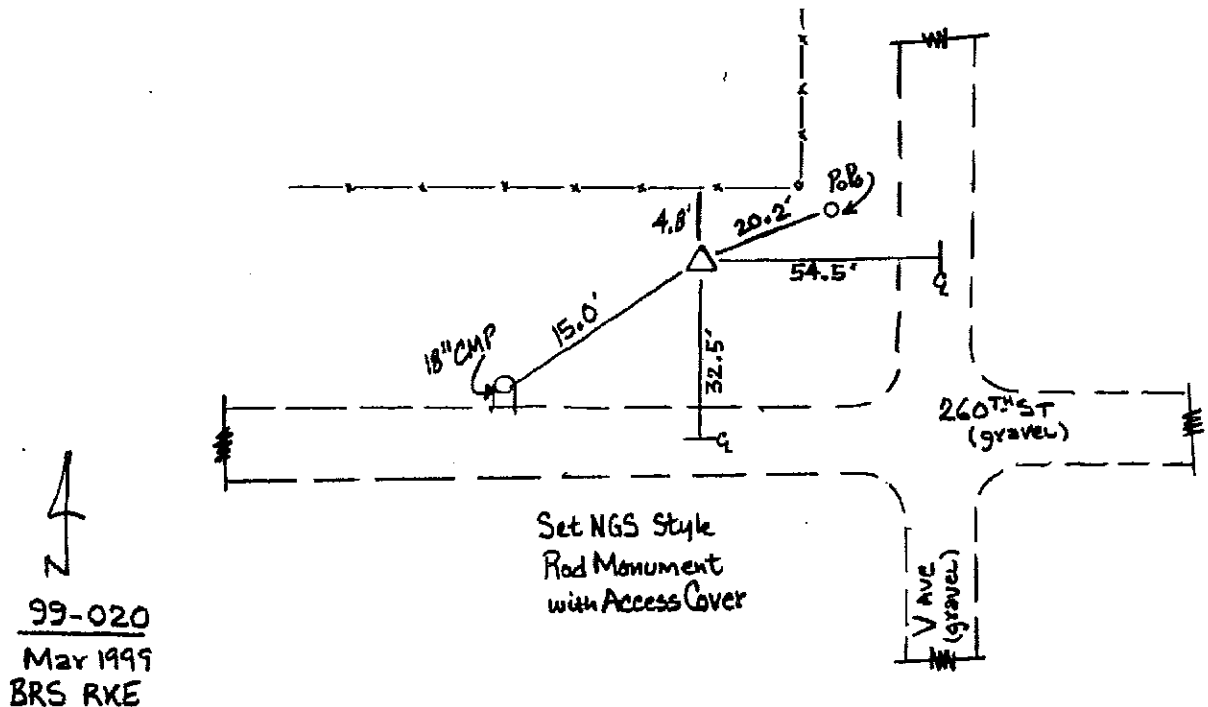
Theta: -0-10-26.77      Combination Factor: 0.99997062

Designation: 99-020 BOONE CO GPS CONTROL PT

**Monument Type:** 5/8" dia driven aluminum rod with a 2-1/2" dia aluminum cap and permanent magnet encased in a 5" dia PVC pipe with an aluminum access cover.

**To Reach:** 32ft N of 260 St, 55ft W of V Av. Near the SE cor of Sec 21 T83N R25W.

Date Printed July 29, 1999





1999  
Boone County, Iowa  
Iowa North Zone (1401)  
NAD\_83(1996)

Point Number: 21

Northing: 3476417.37(Ft)      Easting: 4740730.08(Ft)

Northing: 1059614.133(M)      Easting: 1444977.418(M)

Elev: 1017.12(Ft) NAVD\_88

Elev: 310.017(M) NAVD\_88      Ellip Ht: 282.895(M)      96C Geoid Ht: -27.122(M)

Latitude: 42-02-05.088006 N      Longitude: 94-09-52.132646 W

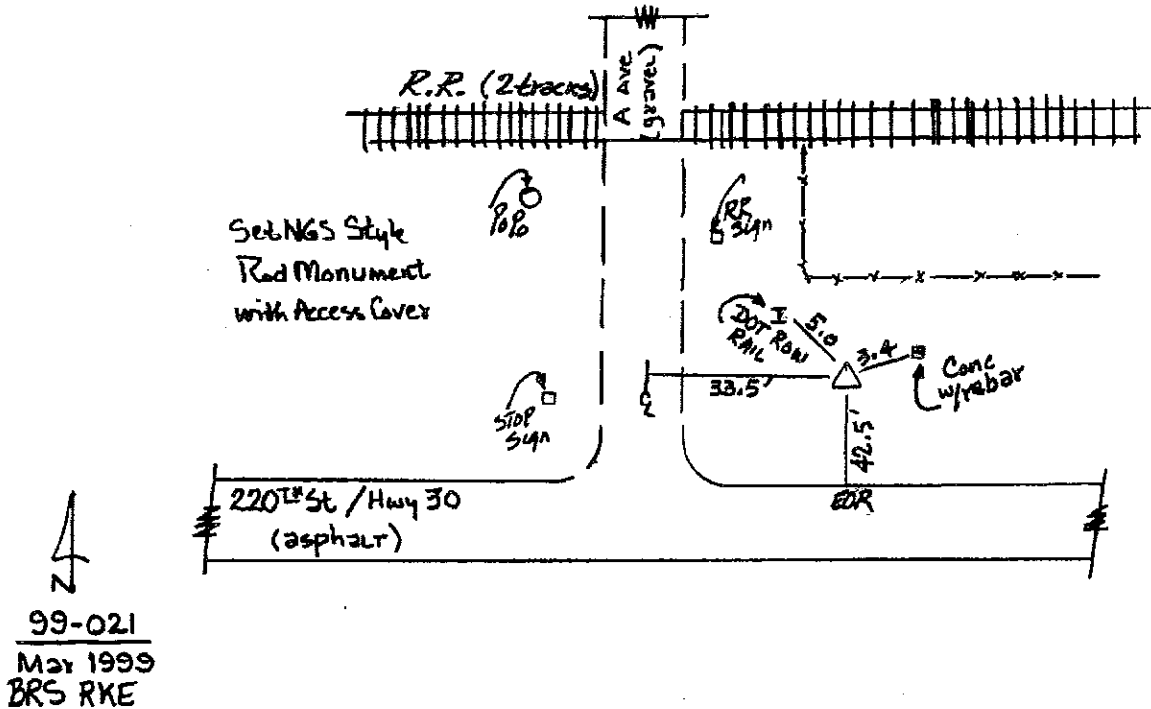
Theta: -0-27-01.25      Combination Factor: 0.99996155

Designation: 99-021 BOONE CO GPS CONTROL PT

**Monument Type:** 5/8" dia driven aluminum rod with a 2-1/2" dia aluminum cap and permanent magnet encased in a 5" dia PVC pipe with an aluminum access cover.

**To Reach:** 32ft E of A Av, 42ft N OF 220 St. Near the SW cor of Sec 31 T84N R28W.

Date Printed July 29, 1999



1999  
Boone County, Iowa  
Iowa North Zone (1401)  
NAD\_83(1996)

Point Number: 22

Northing: 3476100.25(Ft)      Easting: 4772446.20(Ft)

Northing: 1059517.477(M)      Easting: 1454644.511(M)

Elev: 1059.12(Ft) NAVD\_88

Elev: 322.821(M) NAVD\_88      Ellip Ht: 295.434(M)      96C Geoid Ht: -27.387(M)

Latitude: 42-02-04.201709 N      Longitude: 94-02-51.837024 W

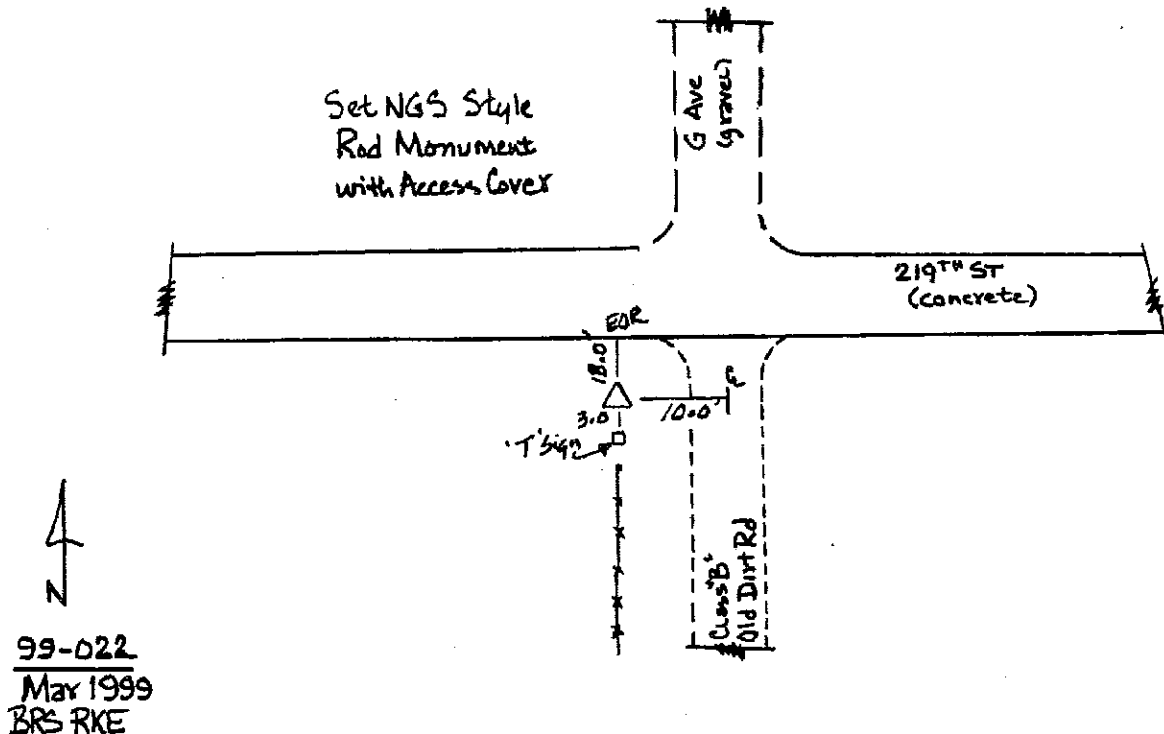
Theta: -0-22-16.40      Combination Factor: 0.99995963

Designation: 99-022 BOONE CO GPS CONTROL PT

**Monument Type:** 5/8" dia driven aluminum rod with a 2-1/2" dia aluminum cap and permanent magnet encased in a 5" dia PVC pipe with an aluminum access cover.

**To Reach:** 10ft E of G Av, 18ft S of 219 St. Near the NW cor of Sec 6 T83N R27W.

Date Printed July 29, 1999



1999  
Boone County, Iowa  
Iowa North Zone (1401)  
NAD\_83(1996)

Point Number: 23

Northing: 3476120.54(Ft)      Easting: 4804155.29(Ft)

Northing: 1059523.660(M)      Easting: 1464309.460(M)

Elev: 886.93(Ft) NAVD\_88

Elev: 270.336(M) NAVD\_88      Ellip Ht: 242.559(M)      96C Geoid Ht: -27.777(M)

Latitude: 42-02-06.215410 N      Longitude: 93-55-51.661491 W

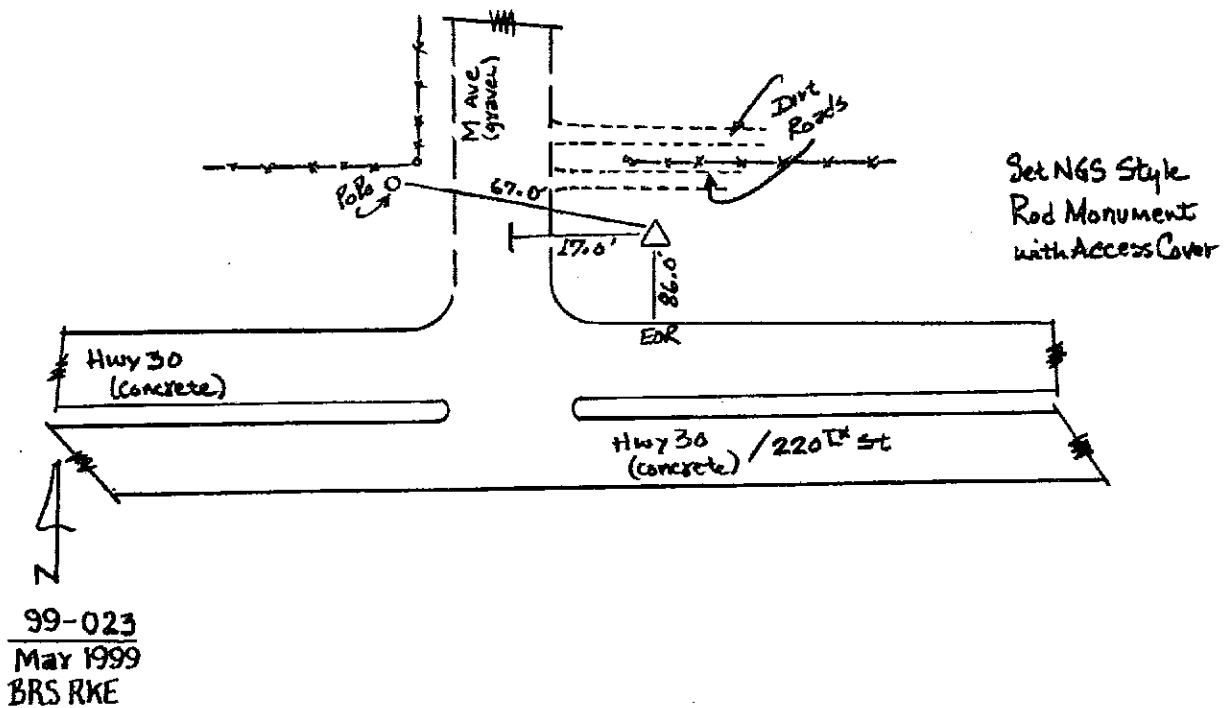
Theta: -0-17-31.63      Combination Factor: 0.99996782

Designation: 99-023 BOONE CO GPS CONTROL PT

**Monument Type:** 5/8" dia driven aluminum rod with a 2-1/2" dia aluminum cap and permanent magnet encased in a 5" dia PVC pipe with an aluminum access cover.

**To Reach:** 18ft E of M Av, 86ft N of Hwy 30. Near the SW cor of Sec 31 T84N R26W.

Date Printed July 29, 1999



1999  
Boone County, Iowa  
Iowa North Zone (1401)  
NAD\_83(1996)

Point Number: 24

Northing: 3476061.91(Ft)      Easting: 4835586.48(Ft)

Northing: 1059505.790(M)      Easting: 1473889.708(M)

Elev: 1168.02(Ft) NAVD\_88

Elev: 356.014(M) NAVD\_88      Ellip Ht: 327.804(M)      96C Geoid Ht: -28.210(M)

Latitude: 42-02-07.006837 N      Longitude: 93-48-55.157805 W

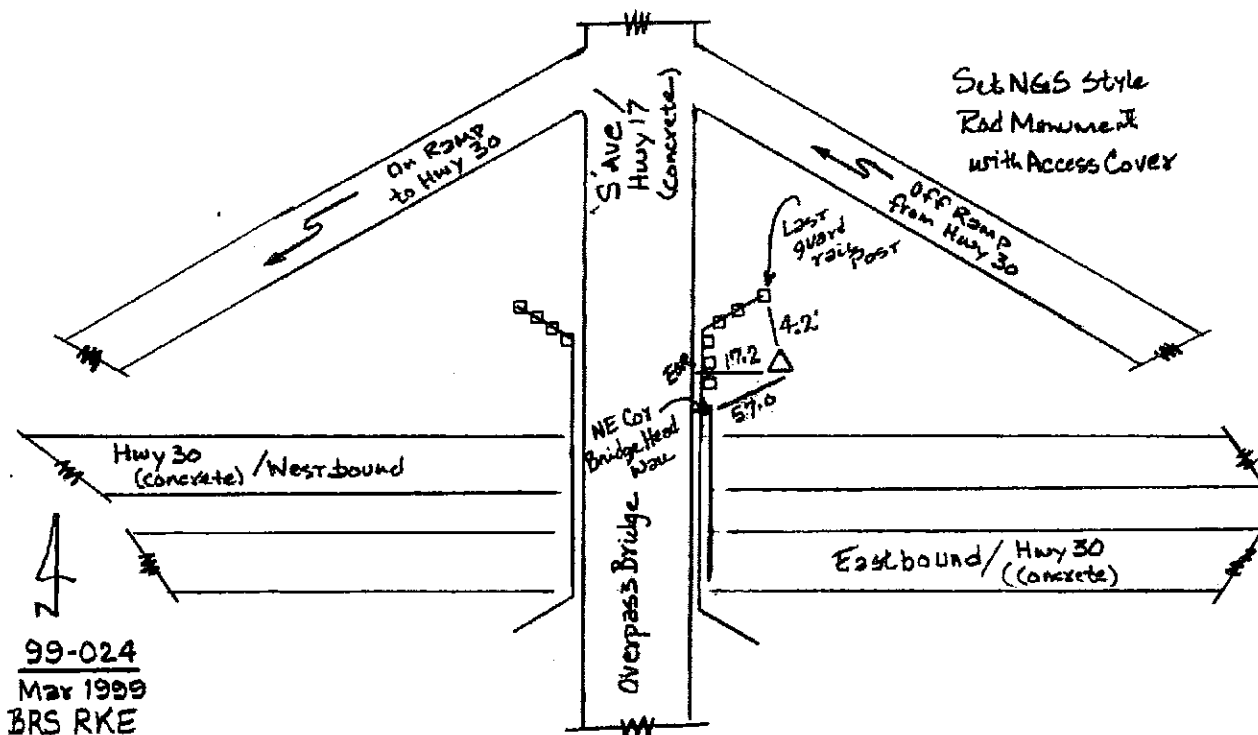
Theta: -0-12-49.35      Combination Factor: 0.99995440

Designation: 99-024 BOONE CO GPS CONTROL PT

**Monument Type:** 5/8" dia driven aluminum rod with a 2-1/2" dia aluminum cap and permanent magnet encased in a 5" dia PVC pipe with an aluminum access cover.

**To Reach:** 18ft E of S Av (Hwy 17), at N end of guard rail at NE end of overpass. Near the SW cor of Sec 31 T84N R25W.

Date Printed July 29, 1999



1999  
Boone County, Iowa  
Iowa North Zone (1401)  
NAD\_83(1996)

Point Number: 25

Northing: 3497436.54(Ft)      Easting: 4740800.76(Ft)

Northing: 1066020.788(M)      Easting: 1444998.960(M)

Elev: 1101.79(Ft) NAVD\_88

Elev: 335.826(M) NAVD\_88      Ellip Ht: 308.884(M)      96C Geoid Ht: -26.942(M)

Latitude: 42-05-32.730951 N      Longitude: 94-09-53.386515 W

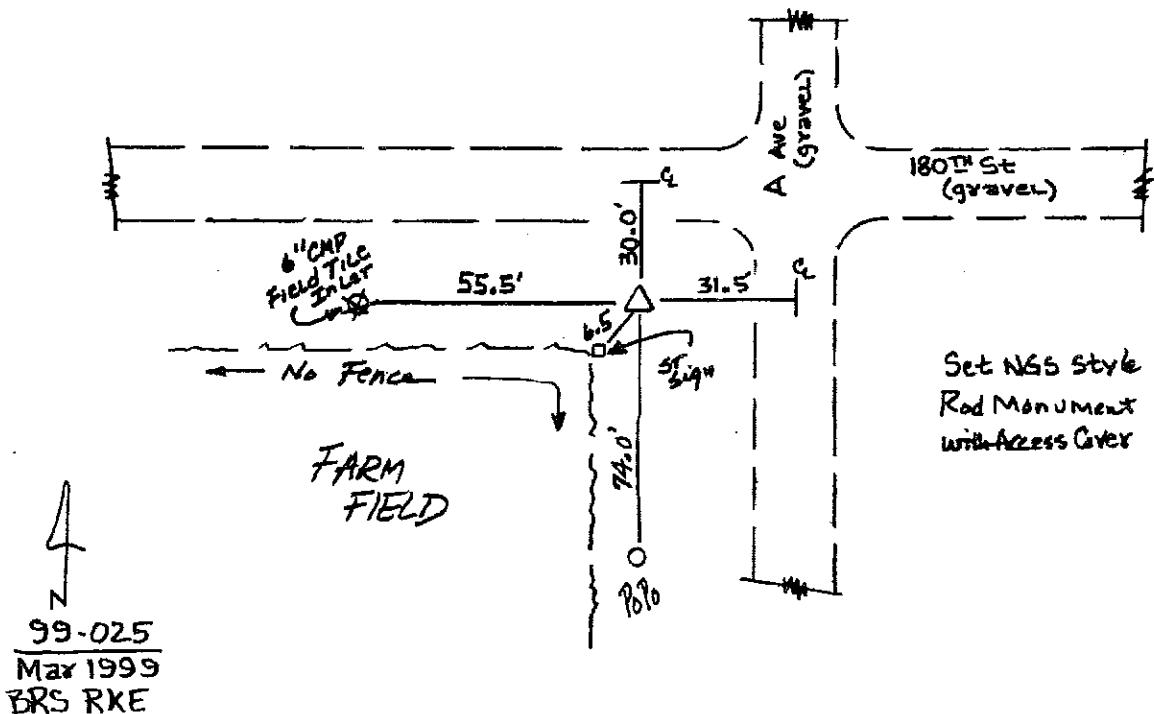
Theta: -0-27-02.10      Combination Factor: 0.99994695

Designation: 99-025 BOONE CO GPS CONTROL PT

**Monument Type:** 5/8" dia driven aluminum rod with a 2-1/2" dia aluminum cap and permanent magnet encased in a 5" dia PVC pipe with an aluminum access cover.

**To Reach:** 32ft W of A Av, 30ft S of 180 St. Near the NE cor Sec 13 T84N R29W.

Date Printed July 29, 1999



1999  
Boone County, Iowa  
Iowa North Zone (1401)  
NAD\_83(1996)

Point Number: 26

Northing: 3497400.53(Ft)      Easting: 4757036.96(Ft)

Northing: 1066009.815(M)      Easting: 1449947.766(M)

Elev: 1068.19(Ft) NAVD\_88

Elev: 325.586(M) NAVD\_88      Ellip Ht: 298.575(M)      96C Geoid Ht: -27.011(M)

Latitude: 42-05-33.579927 N      Longitude: 94-06-18.042063 W

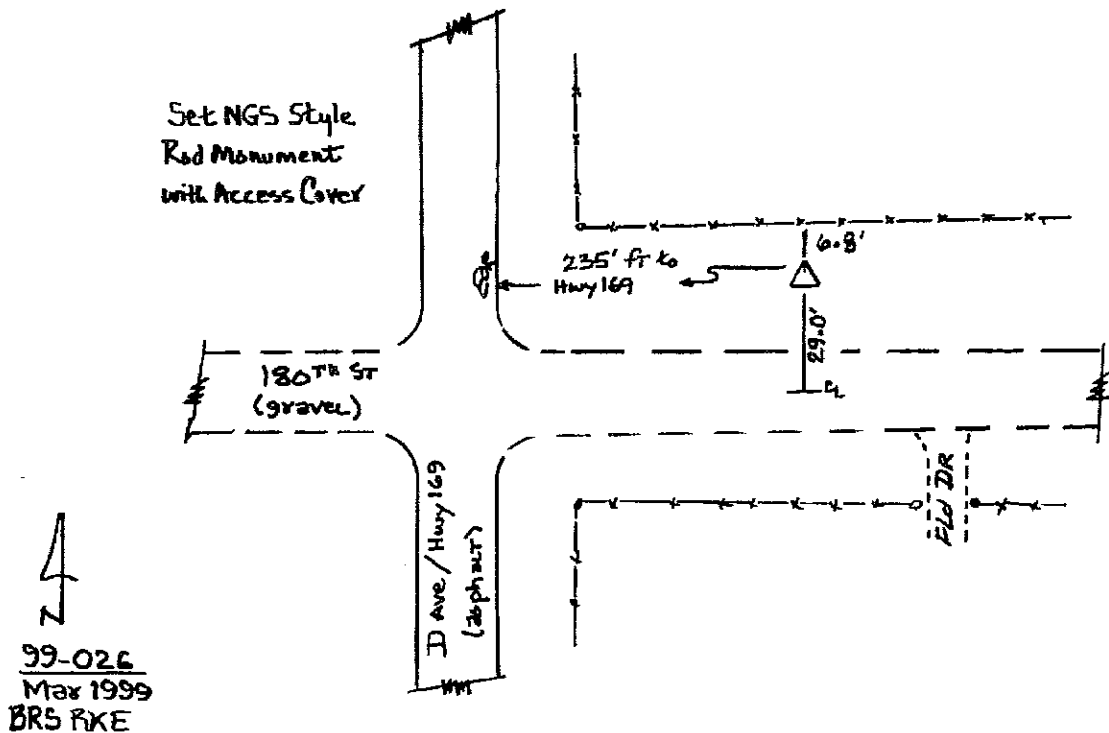
Theta: -0-24-36.16      Combination Factor: 0.99994853

Designation: 99-026 BOONE CO GPS CONTROL PT

**Monument Type:** 5/8" dia driven aluminum rod with a 2-1/2" dia aluminum cap and permanent magnet encased in a 5" dia PVC pipe with an aluminum access cover.

**To Reach:** 30ft N of 180 St, 235ft E of D Av. Near the SW cor Sec 10 T84N R28W.

Date Printed July 29, 1999



1999  
Boone County, Iowa  
Iowa North Zone (1401)  
NAD\_83(1996)

Point Number: 27

Northing: 3497192.78(Ft)      Easting: 4772671.02(Ft)

Northing: 1065946.491(M)      Easting: 1454713.036(M)

Elev: 1123.41(Ft) NAVD\_88

Elev: 342.415(M) NAVD\_88      Ellip Ht: 315.297(M)      96C Geoid Ht: -27.118(M)

Latitude: 42-05-32.580268 N      Longitude: 94-02-50.667782 W

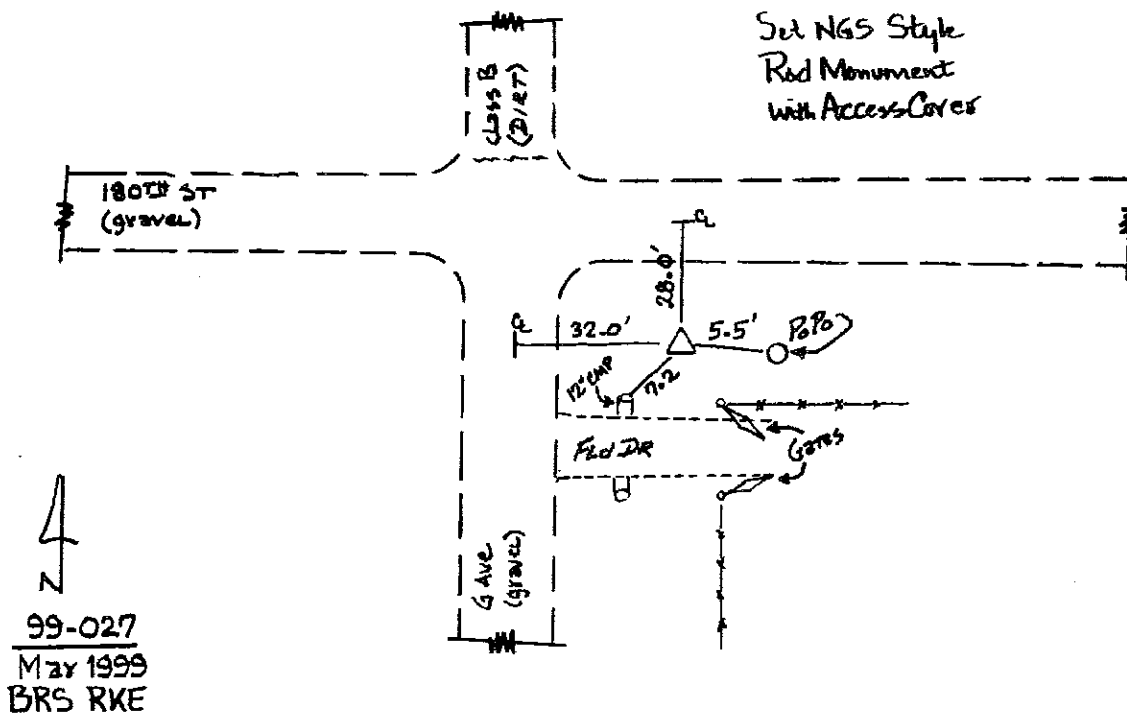
Theta: -0-22-15.61      Combination Factor: 0.99994595

Designation: 99-027 BOONE CO GPS CONTROL PT

**Monument Type:** 5/8" dia driven aluminum rod with a 2-1/2" dia aluminum cap and permanent magnet encased in a 5" dia PVC pipe with an aluminum access cover.

**To Reach:** 28ft S of 180 St, 32ft W of G Av. Near the NE cor of Sec 13 T84N R28W.

Date Printed July 29, 1999



1999  
Boone County, Iowa  
Iowa North Zone (1401)  
NAD\_83(1996)

Point Number: 28

Northing: 3497133.71(Ft)      Easting: 4788413.47(Ft)

Northing: 1065928.486(M)      Easting: 1459511.345(M)

Elev: 1146.45(Ft) NAVD\_88

Elev: 349.440(M) NAVD\_88      Ellip Ht: 322.181(M)      96C Geoid Ht: -27.259(M)

Latitude: 42-05-32.950376 N      Longitude: 93-59-21.869206 W

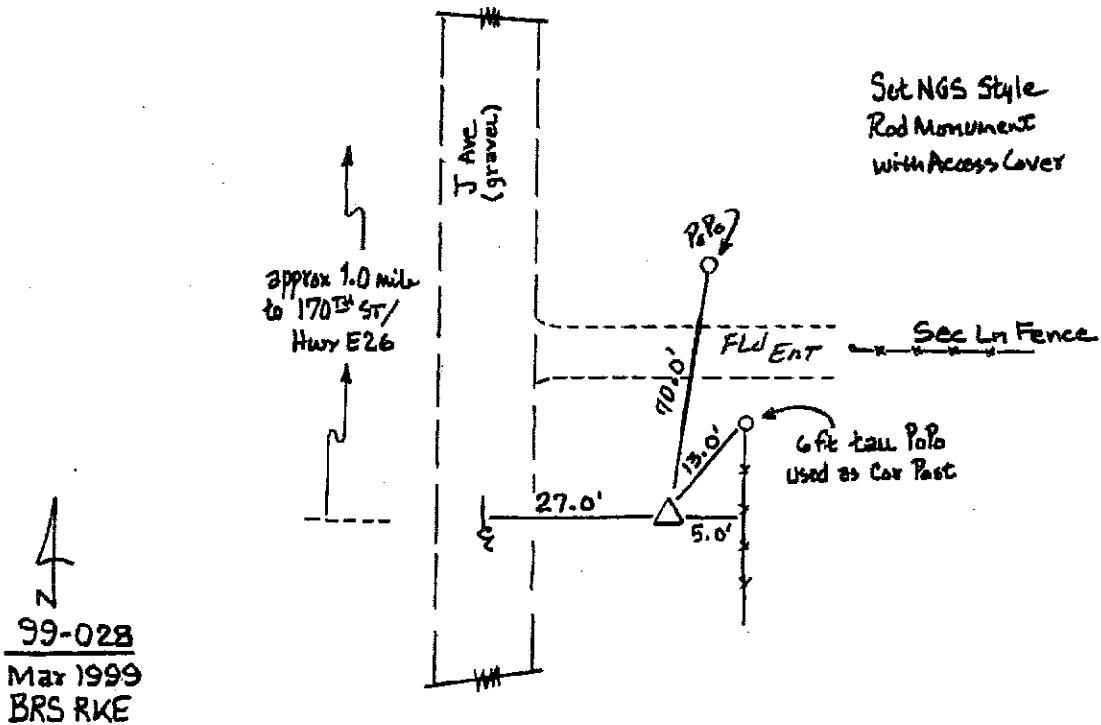
Theta: -0-19-54.10      Combination Factor: 0.99994486

Designation: 99-028 BOONE CO GPS CONTROL PT

**Monument Type:** 5/8" dia driven aluminum rod with a 2-1/2" dia aluminum cap and permanent magnet encased in a 5" dia PVC pipe with an aluminum access cover.

**To Reach:** 28ft E of J Av, on S side of field ent to E. Near the NW cor of Sec 15 T84N R27W.

Date Printed July 29, 1999





1999  
Boone County, Iowa  
Iowa North Zone (1401)  
NAD\_83(1996)

Point Number: 29

Northing: 3497422.20(Ft)      Easting: 4802980.22(Ft)

Northing: 1066016.417(M)      Easting: 1463951.300(M)

Elev: 933.63(Ft) NAVD\_88

Elev: 284.572(M) NAVD\_88      Ellip Ht: 257.168(M)      96C Geoid Ht: -27.404(M)

Latitude: 42-05-36.587648 N      Longitude: 93-56-08.687330 W

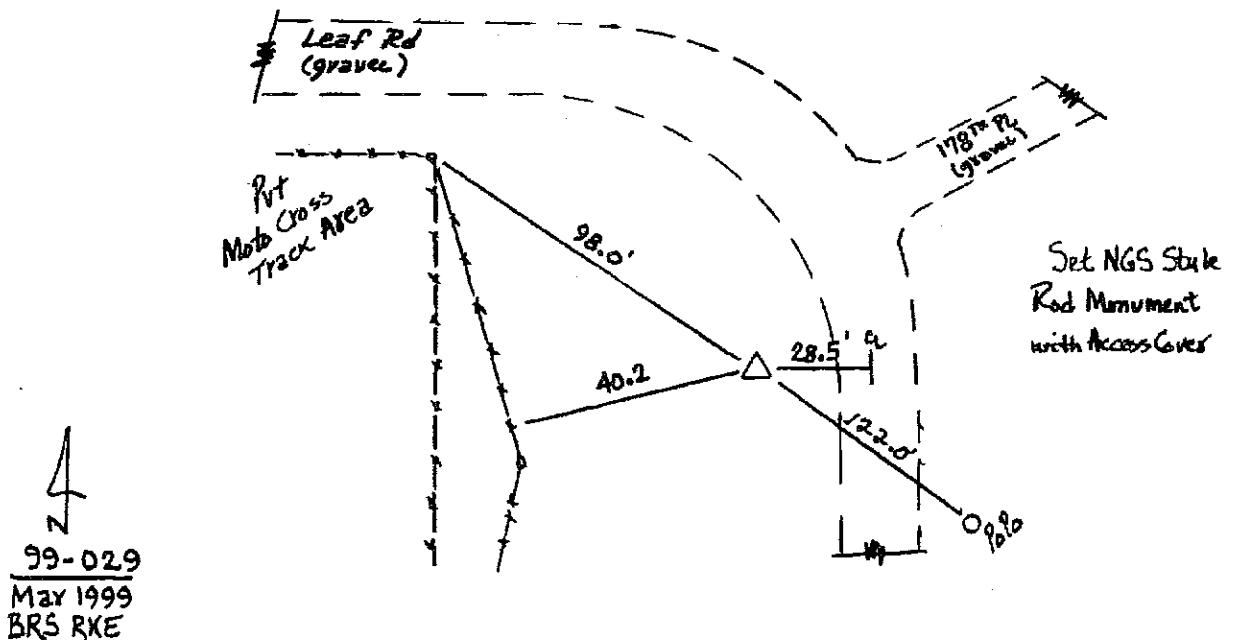
Theta: -0-17-43.17      Combination Factor: 0.99995488

Designation: 99-029 BOONE CO GPS CONTROL PT

**Monument Type:** 5/8" dia driven aluminum rod with a 2-1/2" dia aluminum cap and permanent magnet encased in a 5" dia PVC pipe with an aluminum access cover.

**To Reach:** 28ft SW of Curve in Leaf Rd, at T inter of 178 Place. In the SE 1/4 of Sec 12 T84N R27W.

Date Printed July 29, 1999



1999  
Boone County, Iowa  
Iowa North Zone (1401)  
NAD\_83(1996)

Point Number: 30

Northing: 3497057.90(Ft)      Easting: 4819706.40(Ft)

Northing: 1065905.378(M)      Easting: 1469049.449(M)

Elev: 1140.83(Ft) NAVD\_88

Elev: 347.727(M) NAVD\_88      Ellip Ht: 320.133(M)      96C Geoid Ht: -27.594(M)

Latitude: 42-05-33.780295 N      Longitude: 93-52-26.819140 W

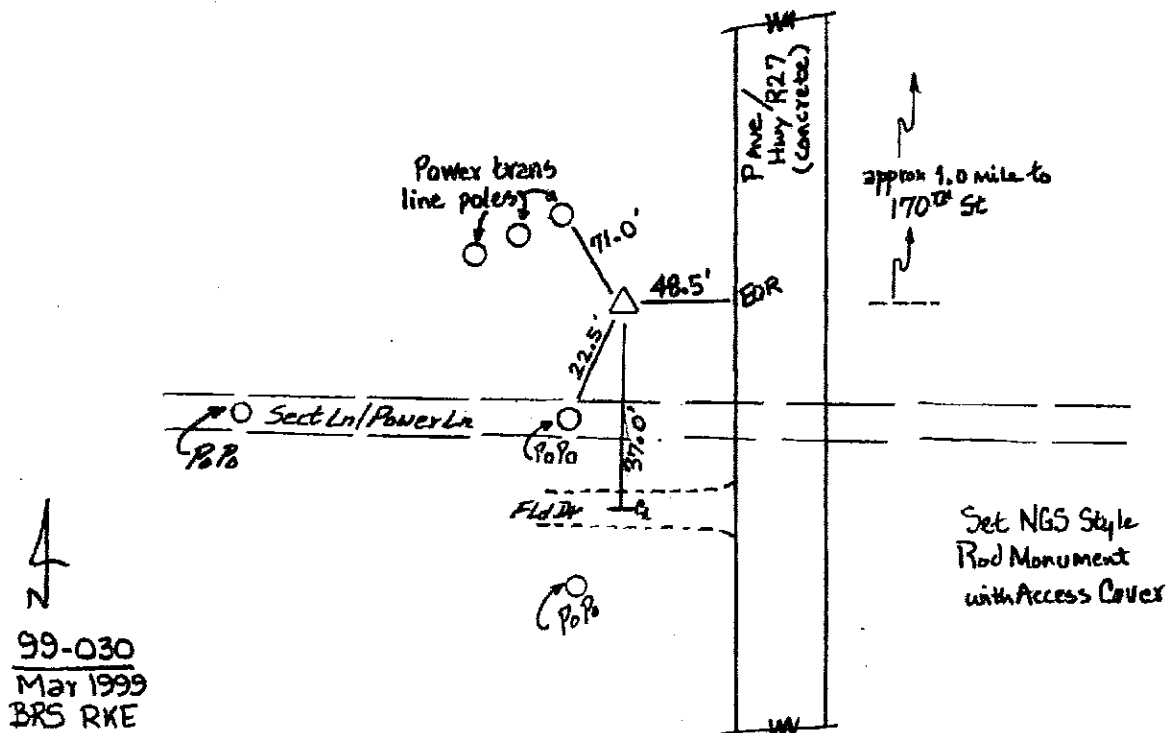
Theta: -0-15-12.80      Combination Factor: 0.99994514

Designation: 99-030 BOONE CO GPS CONTROL PT

**Monument Type:** 5/8" dia driven aluminum rod with a 2-1/2" dia aluminum cap and permanent magnet encased in a 5" dia PVC pipe with an aluminum access cover.

**To Reach:** 48ft W of P Av, 20ft N of Sec line. Near the SE cor of Sec 9 T84N R26W.

Date Printed July 29, 1999



1999  
Boone County, Iowa  
Iowa North Zone (1401)  
NAD\_83(1996)

Point Number: 31

Northing: 3496775.15(Ft)      Easting: 4835521.52(Ft)

Northing: 1065819.198(M)      Easting: 1473869.908(M)

Elev: 1120.54(Ft) NAVD\_88

Elev: 341.541(M) NAVD\_88      Ellip Ht: 313.728(M)      96C Geoid Ht: -27.814(M)

Latitude: 42-05-31.624697 N      Longitude: 93-48-57.044050 W

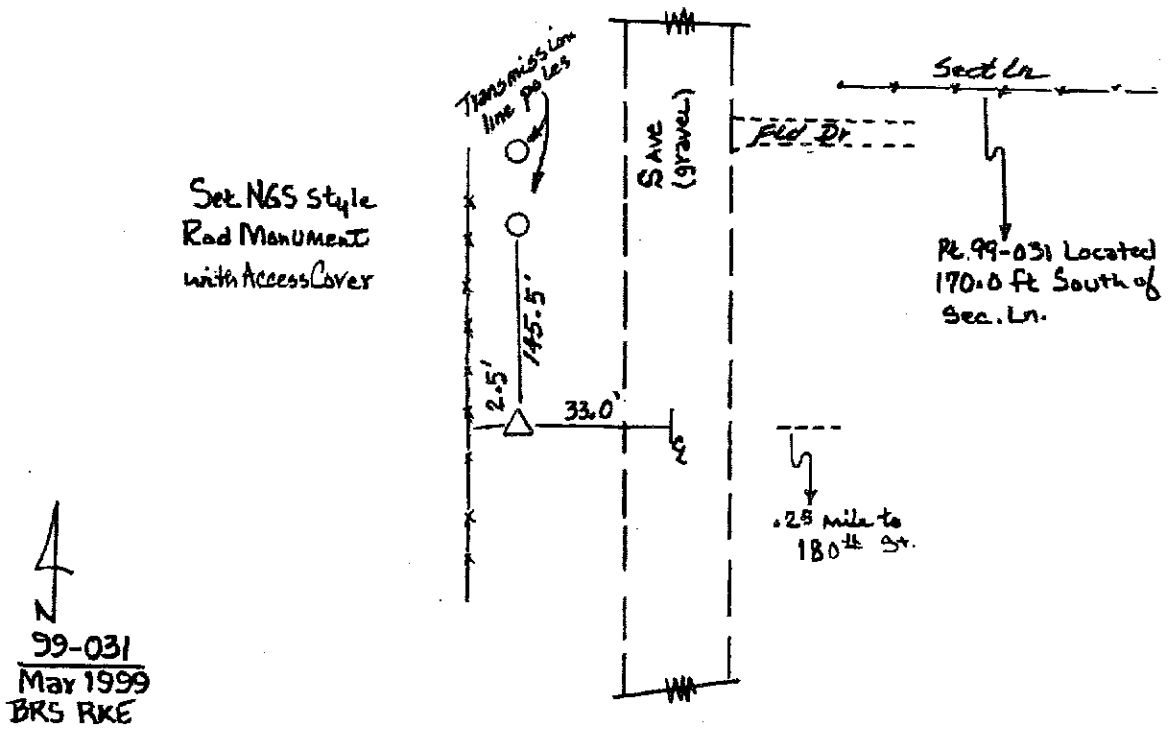
Theta: -0-12-50.63      Combination Factor: 0.99994625

Designation: 99-031 BOONE CO GPS CONTROL PT

**Monument Type:** 5/8" dia driven aluminum rod with a 2-1/2" dia aluminum cap and permanent magnet encased in a 5" dia PVC pipe with an aluminum access cover.

**To Reach:** 32ft W of S Av, 200ft S of Sec line. Near the NE cor of Sec 13 T84N R26W.

Date Printed July 29, 1999



NEAR NW COR SEC 18

1999  
Boone County, Iowa  
Iowa North Zone (1401)  
NAD\_83(1996)

Point Number: 32

Northing: 3496886.40(Ft)      Easting: 4851458.42(Ft)

Northing: 1065853.106(M)      Easting: 1478727.483(M)

Elev: 1046.16(Ft) NAVD\_88

Elev: 318.870(M) NAVD\_88      Ellip Ht: 290.802(M)      96C Geoid Ht: -28.068(M)

Latitude: 42-05-33.257197 N      Longitude: 93-45-25.673904 W

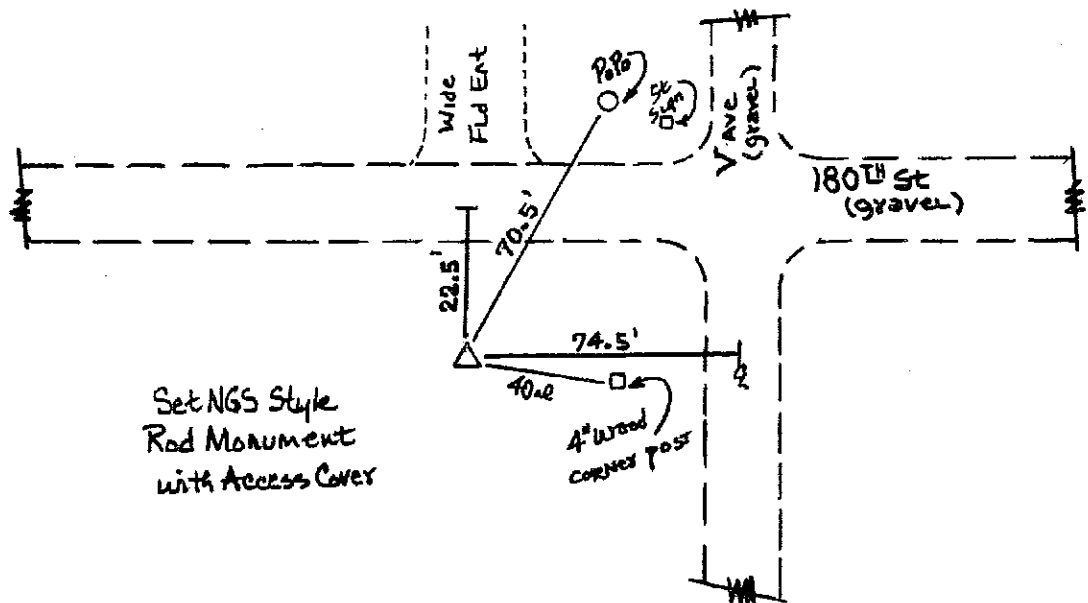
Theta: -0-10-27.37      Combination Factor: 0.99994976

Designation: 99-032 BOONE CO GPS CONTROL PT

**Monument Type:** 5/8" dia driven aluminum rod with a 2-1/2" dia aluminum cap and permanent magnet encased in a 5" dia PVC pipe with an aluminum access cover.

**To Reach:** 22ft S of 180 St, 75 ft W of V Av. Near the NE cor of Sec 16 T84N R25W.

Date Printed July 29, 1999



99-032  
Mar 199  
BRS RKE

NEAR NE COR SEC 16

1999  
Boone County, Iowa  
Iowa North Zone (1401)  
NAD\_83(1996)

Point Number: 33

Northing: 3519089.09(Ft)      Easting: 4741062.50(Ft)

Northing: 1072620.499(M)      Easting: 1445078.742(M)

Elev: 1116.65(Ft) NAVD\_88

Elev: 340.355(M) NAVD\_88      Ellip Ht: 313.493(M)      96C Geoid Ht: -26.862(M)

Latitude: 42-09-06.645593 N      Longitude: 94-09-52.172269 W

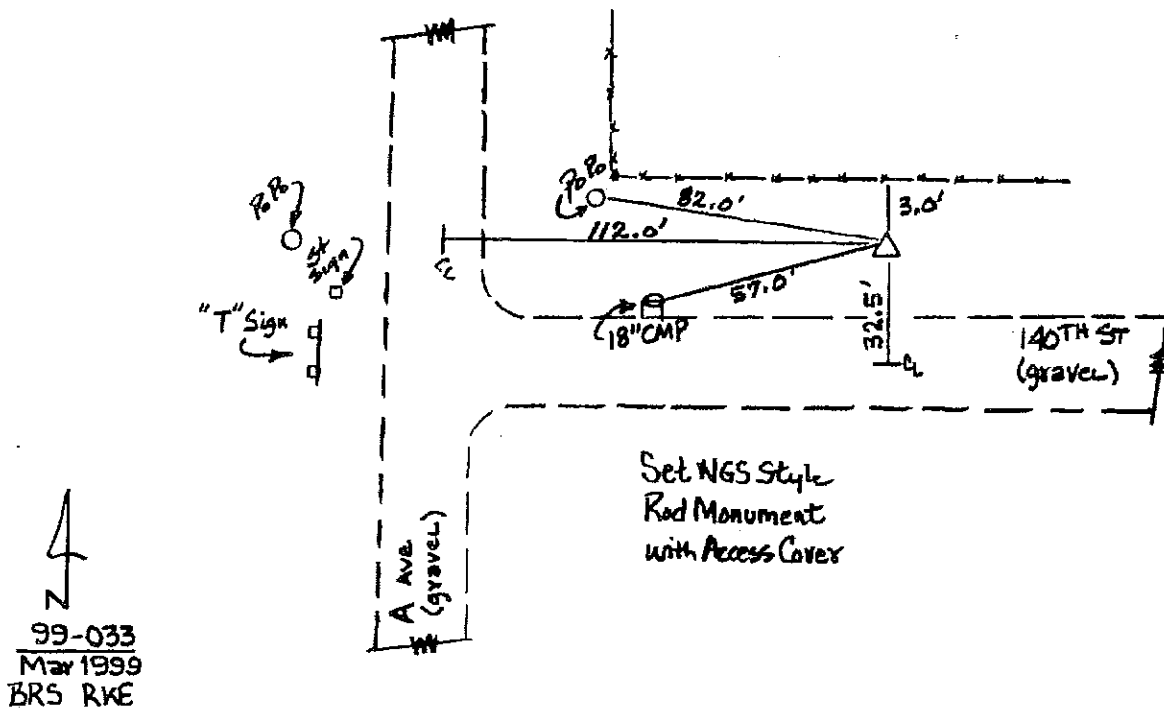
Theta: -0-27-01.28      Combination Factor: 0.99993643

Designation: 99-033 BOONE CO GPS CONTROL PT

**Monument Type:** 5/8" dia driven aluminum rod with a 2-1/2" dia aluminum cap and permanent magnet encased in a 5" dia PVC pipe with an aluminum access cover.

**To Reach:** 32ft N of 140 St, 112ft E of A Av. Near the SW cor of Sec 19 T85N R28W.

Date Printed July 29, 1999



1999  
Boone County, Iowa  
Iowa North Zone (1401)  
NAD\_83(1996)

Point Number: 34

Northing: 3518796.47(Ft)      Easting: 4772839.50(Ft)

Northing: 1072531.309(M)      Easting: 1454764.390(M)

Elev: 1132.37(Ft) NAVD\_88

Elev: 345.146(M) NAVD\_88      Ellip Ht: 318.197(M)      96C Geoid Ht: -26.949(M)

Latitude: 42-09-06.004844 N      Longitude: 94-02-50.288185 W

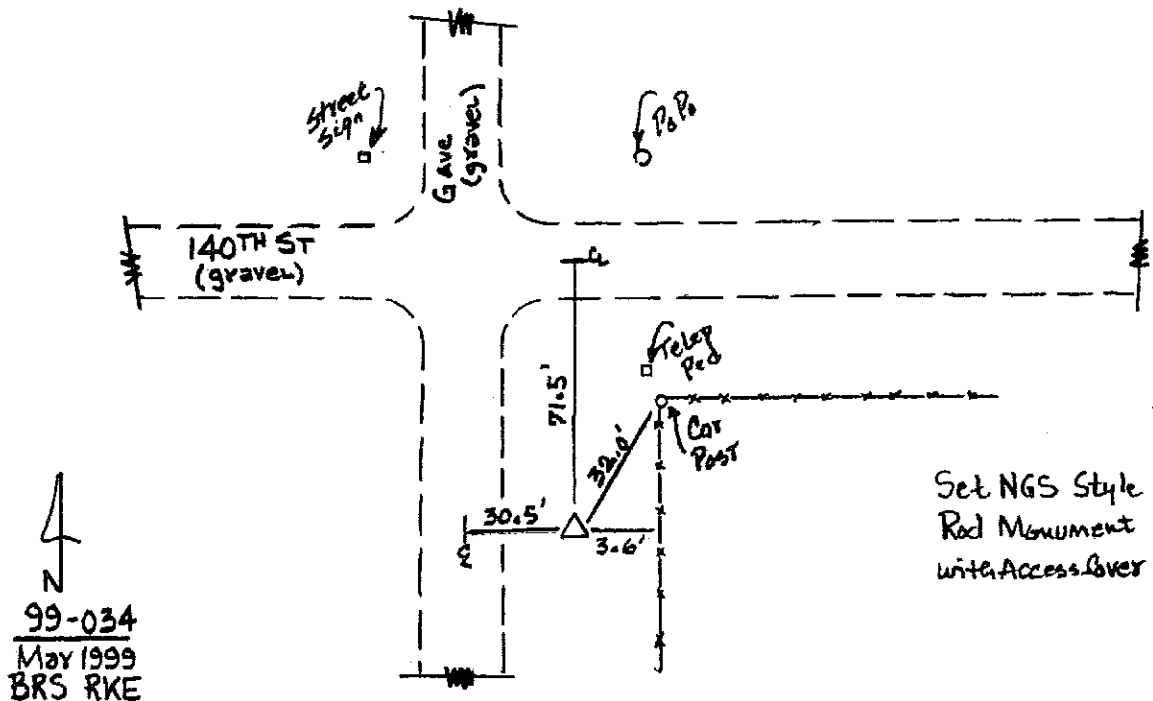
Theta: -0-22-15.35      Combination Factor: 0.99993572

Designation: 99-034 BOONE CO GPS CONTROL PT

**Monument Type:** 5/8" dia driven aluminum rod with a 2-1/2" dia aluminum cap and permanent magnet encased in a 5" dia PVC pipe with an aluminum access cover.

**To Reach:** 72ft S of 140 St, 30ft E of G Av. Near the NW cor of Sec 30 T85N R27W.

Date Printed July 29, 1999



1999  
Boone County, Iowa  
Iowa North Zone (1401)  
NAD\_83(1996)

Point Number: 35

Northing: 3518939.24(Ft)      Easting: 4803655.27(Ft)

Northing: 1072574.825(M)      Easting: 1464157.054(M)

Elev: 1165.99(Ft) NAVD\_88

Elev: 355.394(M) NAVD\_88      Ellip Ht: 328.239(M)      96C Geoid Ht: -27.155(M)

Latitude: 42-09-09.181408 N      Longitude: 93-56-01.197937 W

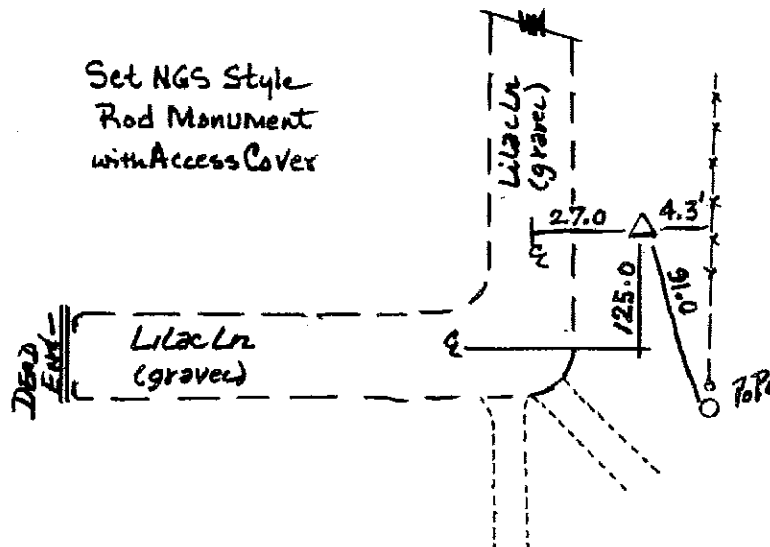
Theta: -0-17-38.09      Combination Factor: 0.99993401

Designation: 99-035 BOONE CO GPS CONTROL PT

**Monument Type:** 5/8" dia driven aluminum rod with a 2-1/2" dia aluminum cap and permanent magnet encased in a 5" dia PVC pipe with an aluminum access cover.

**To Reach:** 28ft E of Lilac Ln, 125ft N of curve to W. 600ft W of the SE cor of Sec 24 T85N R27W.

Date Printed July 29, 1999



↑  
N  
99-035  
Mar 1999  
BRS RKE

1999  
Boone County, Iowa  
Iowa North Zone (1401)  
NAD\_83(1996)

Point Number: 36

Northing: 3518609.32(Ft)      Easting: 4835569.99(Ft)

Northing: 1072474.265(M)      Easting: 1473884.682(M)

Elev: 1096.31(Ft) NAVD\_88

Elev: 334.155(M) NAVD\_88      Ellip Ht: 306.671(M)      96C Geoid Ht: -27.484(M)

Latitude: 42-09-07.320065 N      Longitude: 93-48-57.483565 W

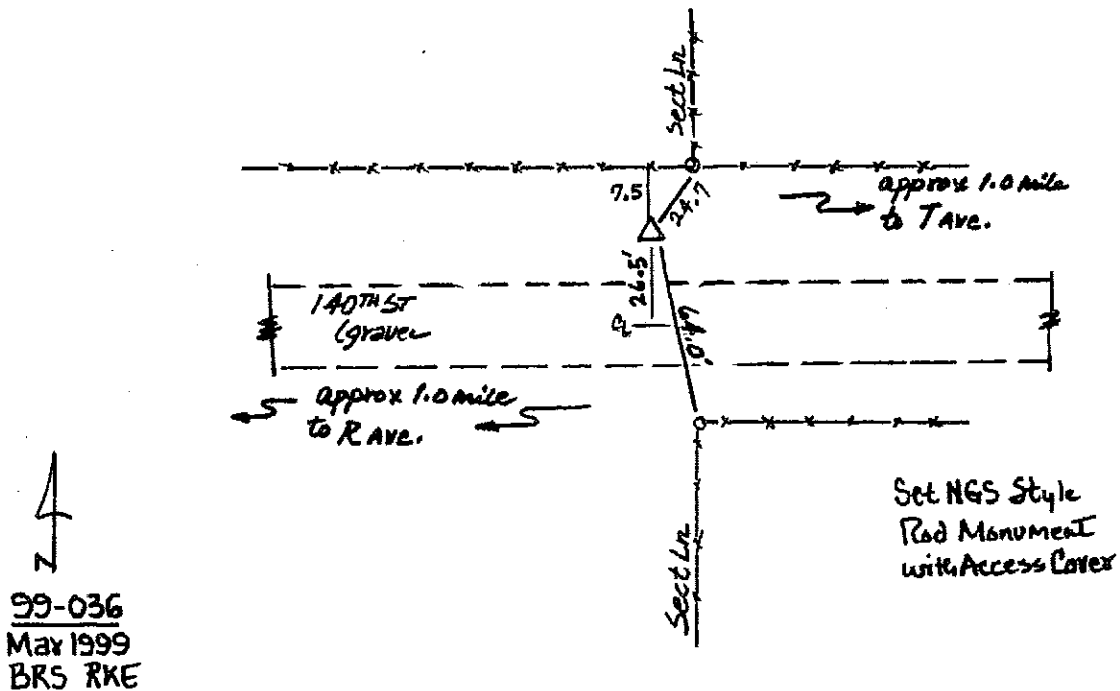
Theta: -0-12-50.92      Combination Factor: 0.99993748

Designation: 99-036 BOONE CO GPS CONTROL PT

**Monument Type:** 5/8" dia driven aluminum rod with a 2-1/2" dia aluminum cap and permanent magnet encased in a 5" dia PVC pipe with an aluminum access cover.

**To Reach:** 26ft N of 140 St, 20ft W of Sec line. Near the SE cor of Sec 24 T85N R26W.

Date Printed July 29, 1999





1999  
Boone County, Iowa  
Iowa North Zone (1401)  
NAD\_83(1996)

Point Number: 37

Northing: 3539680.95(Ft)      Easting: 4819946.90(Ft)

Northing: 1078896.912(M)      Easting: 1469122.754(M)

Elev: 1105.39(Ft) NAVD\_88

Elev: 336.924(M) NAVD\_88      Ellip Ht: 309.822(M)      96C Geoid Ht: -27.101(M)

Latitude: 42-12-34.850528 N      Longitude: 93-52-26.129808 W

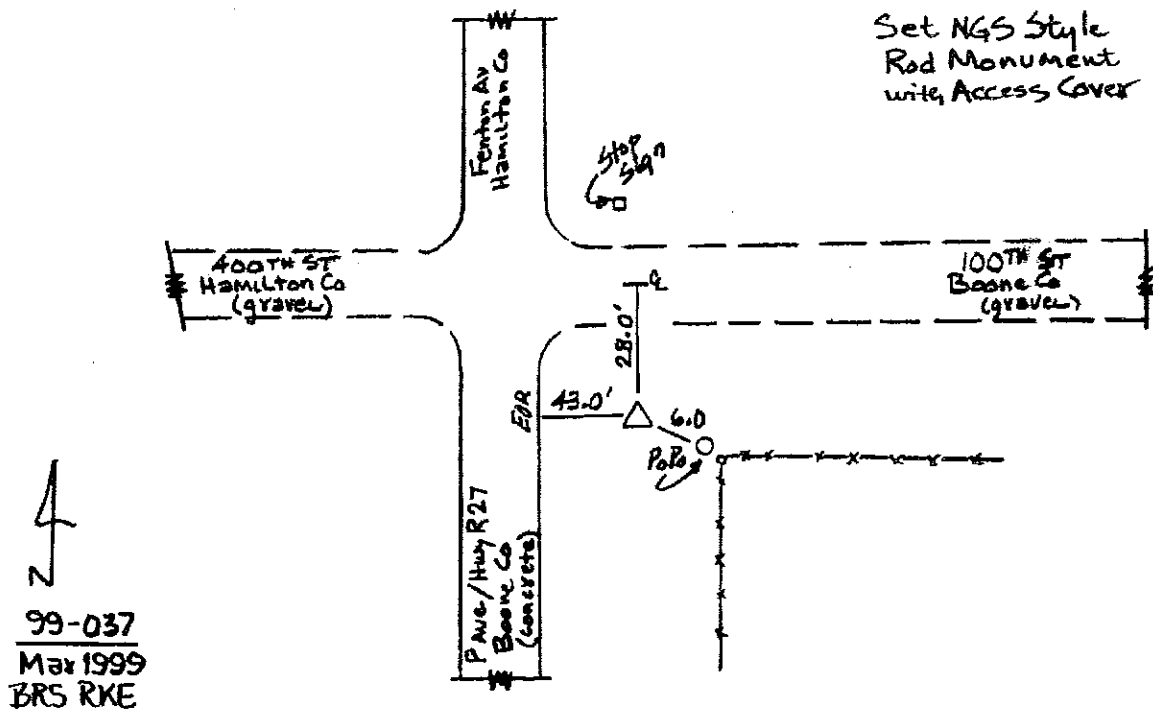
Theta: -0-15-12.33      Combination Factor: 0.99992850

Designation: 99-037 BOONE CO GPS CONTROL PT

**Monument Type:** 5/8" dia driven aluminum rod with a 2-1/2" dia aluminum cap and permanent magnet encased in a 5" dia PVC pipe with an aluminum access cover.

**To Reach:** 28ft S of 100 St, 44ft E of P Av(R27). Near the NW cor of Sec 3 T85N R26W.

Date Printed July 29, 1999



1999  
Boone County, Iowa  
Iowa North Zone (1401)  
NAD\_83(1996)

Point Number: 38

Northing: 3539551.77(Ft)      Easting: 4835446.43(Ft)

Northing: 1078857.539(M)      Easting: 1473847.019(M)

Elev: 1055.60(Ft) NAVD\_88

Elev: 321.747(M) NAVD\_88      Ellip Ht: 294.503(M)      96C Geoid Ht: -27.245(M)

Latitude: 42-12-34.199871 N      Longitude: 93-49-00.165569 W

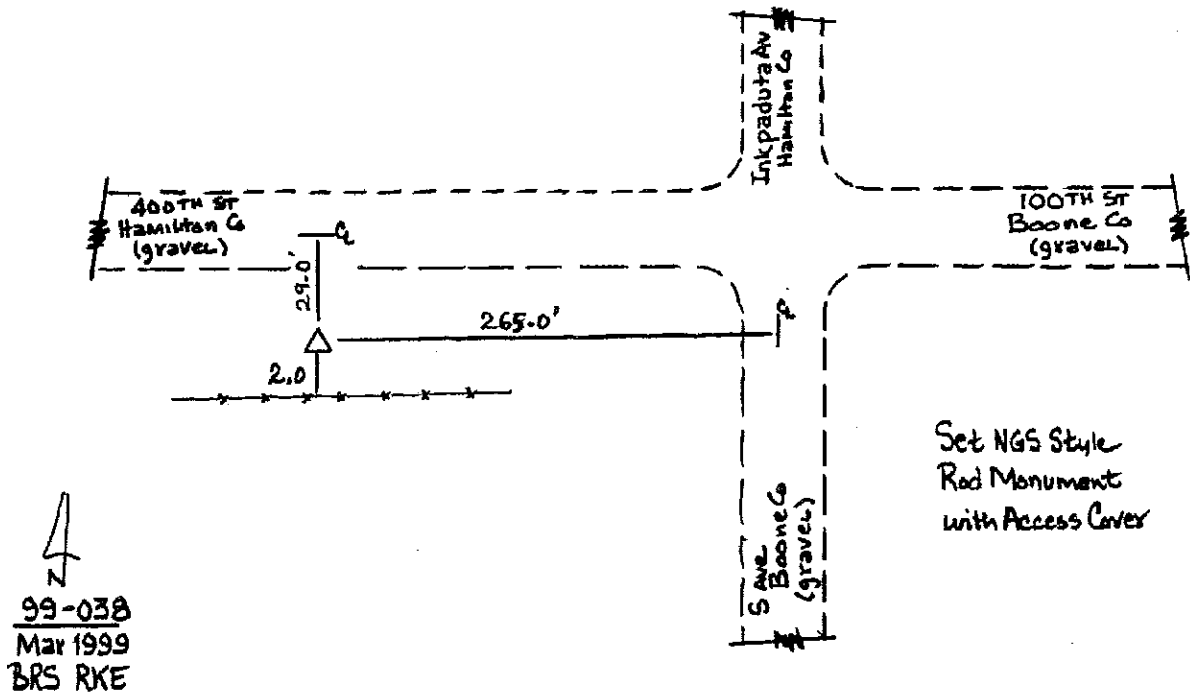
Theta: -0-12-52.74      Combination Factor: 0.99993093

Designation: 99-038 BOONE CO GPS CONTROL PT

**Monument Type:** 5/8" dia driven aluminum rod with a 2-1/2" dia aluminum cap and permanent magnet encased in a 5" dia PVC pipe with an aluminum access cover.

**To Reach:** 30ft S of 100 St, 265ft W of S Av on top of berm. Near the NE cor of Sec 1 T85N R26W.

Date Printed July 29, 1999



1999  
Boone County, Iowa  
Iowa North Zone (1401)  
NAD\_83(1996)

Point Number: 39

Northing: 3539456.69(Ft)      Easting: 4851625.64(Ft)

Northing: 1078828.556(M)      Easting: 1478778.453(M)

Elev: 1025.21(Ft) NAVD\_88

Elev: 312.484(M) NAVD\_88      Ellip Ht: 285.055(M)      96C Geoid Ht: -27.429(M)

Latitude: 42-12-33.802863 N      Longitude: 93-45-25.172394 W

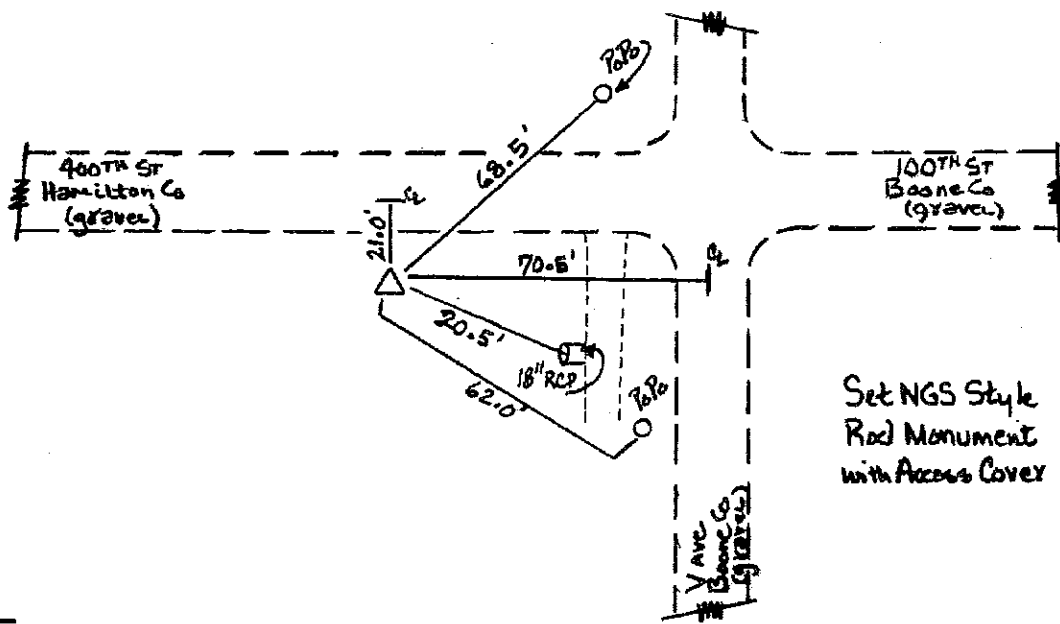
Theta: -0-10-27.03      Combination Factor: 0.99993243

Designation: 99-039 BOONE CO GPS CONTROL PT

**Monument Type:** 5/8" dia driven aluminum rod with a 2-1/2" dia aluminum cap and permanent magnet encased in a 5" dia PVC pipe with an aluminum access cover.

**To Reach:** 20ft S of 100 St, 70ft W of V Av. Near the NE cor of Sec 4 T85N R25W.

Date Printed July 29, 1999



↑  
N  
**99-039**  
**Mar 1999**  
**BRS RKE**

1999  
Boone County, Iowa  
Iowa North Zone (1401)  
NAD\_83(1996)

Point Number: 40

Northing: 3481362.86(Ft)      Easting: 4772520.61(Ft)

Northing: 1061121.523(M)      Easting: 1454667.192(M)

Elev: 1098.56(Ft) NAVD\_88

Elev: 334.842(M) NAVD\_88      Ellip Ht: 307.532(M)      96C Geoid Ht: -27.311(M)

Latitude: 42-02-56.193574 N      Longitude: 94-02-51.302698 W

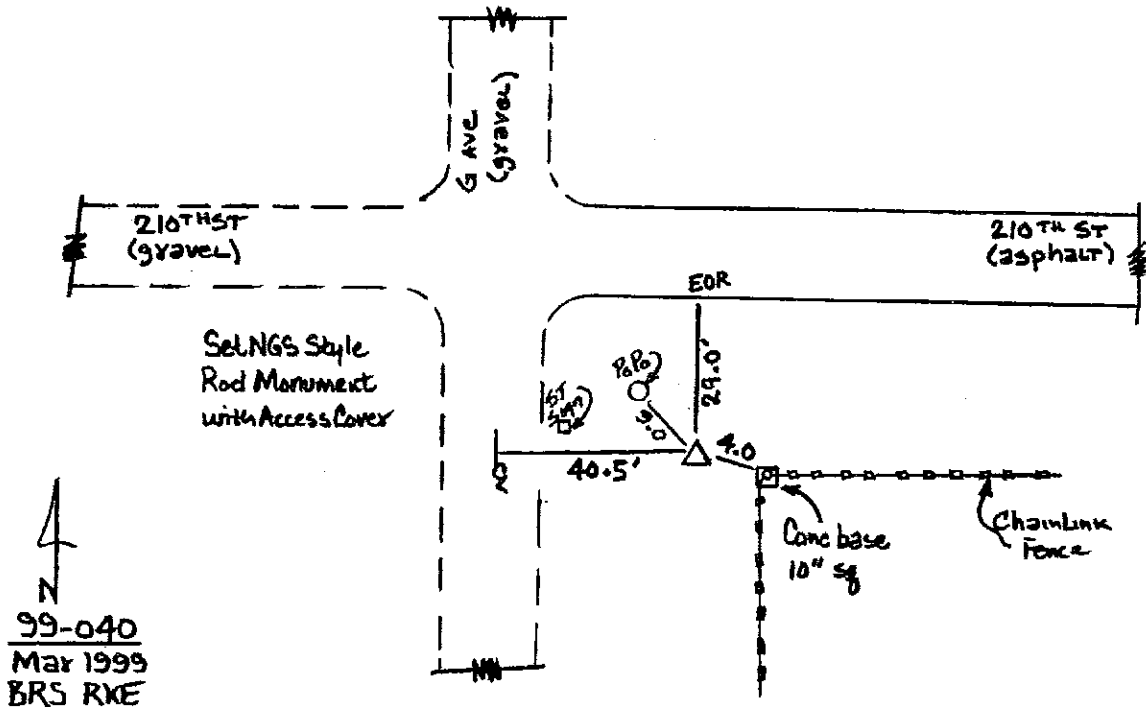
Theta: -0-22-16.04      Combination Factor: 0.99995500

Designation: 99-040 BOONE CO GPS CONTROL PT

**Monument Type:** 5/8" dia driven aluminum rod with a 2-1/2" dia aluminum cap and permanent magnet encased in a 5" dia PVC pipe with an aluminum access cover.

**To Reach:** 30ft S of 210 St, 40ft E of G Av. Near the NW cor of Sec 31 T84N R27W.

Date Printed July 29, 1999



1999  
Boone County, Iowa  
Iowa North Zone (1401)  
NAD\_83(1996)

Point Number: 41

Northing: 3491815.94(Ft)      Easting: 4811889.28(Ft)

Northing: 1064307.626(M)      Easting: 1466666.786(M)

Elev: 1110.83(Ft) NAVD\_88

Elev: 338.581(M) NAVD\_88      Ellip Ht: 310.995(M)      96C Geoid Ht: -27.586(M)

Latitude: 42-04-41.641773 N      Longitude: 93-54-10.168376 W

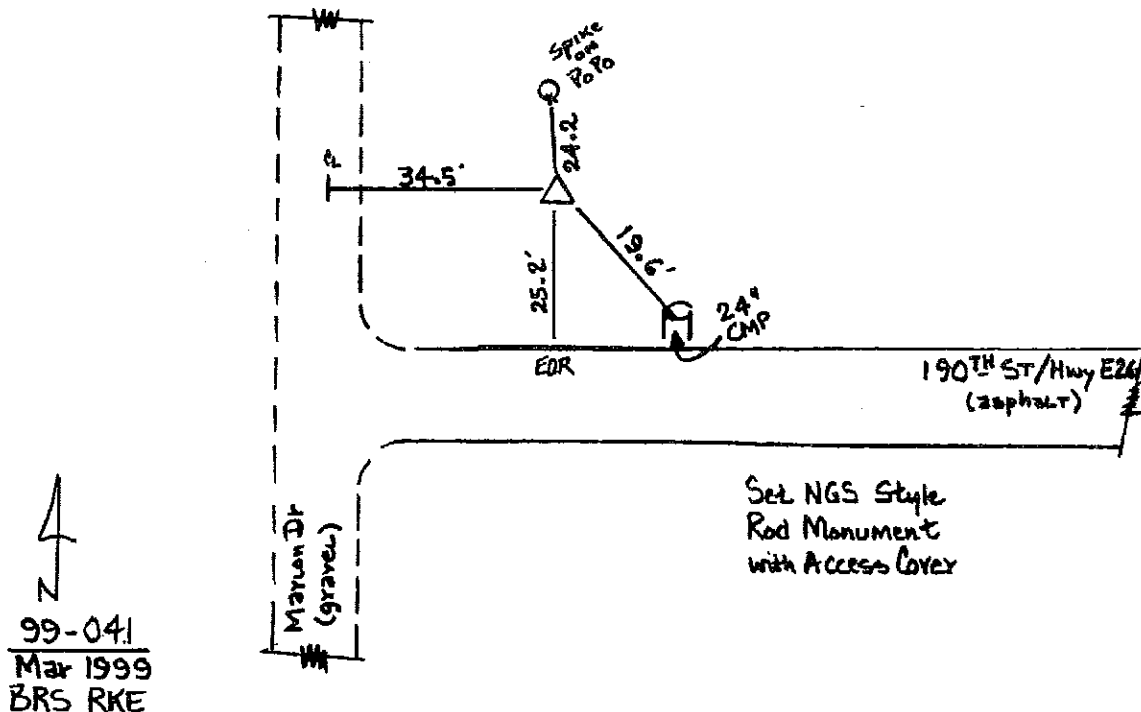
Theta: -0-16-22.84      Combination Factor: 0.99994912

Designation: 99-041 BOONE CO GPS CONTROL PT

**Monument Type:** 5/8" dia driven aluminum rod with a 2-1/2" dia aluminum cap and permanent magnet encased in a 5" dia PVC pipe with an aluminum access cover.

**To Reach:** 35ft E of Marion Drive, 25ft N of 190 St(E26). near the S 1/4 cor of Sec 17 T84N R26W.

Date Printed July 29, 1999



1999  
Boone County, Iowa  
Iowa North Zone (1401)  
NAD\_83(1996)

Point Number: 42

Northing: 3502213.94(Ft)      Easting: 4819811.40(Ft)

Northing: 1067476.943(M)      Easting: 1469081.454(M)

Elev: 1131.05(Ft) NAVD\_88

Elev: 344.746(M) NAVD\_88      Ellip Ht: 317.230(M)      96C Geoid Ht: -27.517(M)

Latitude: 42-06-24.719817 N      Longitude: 93-52-25.728847 W

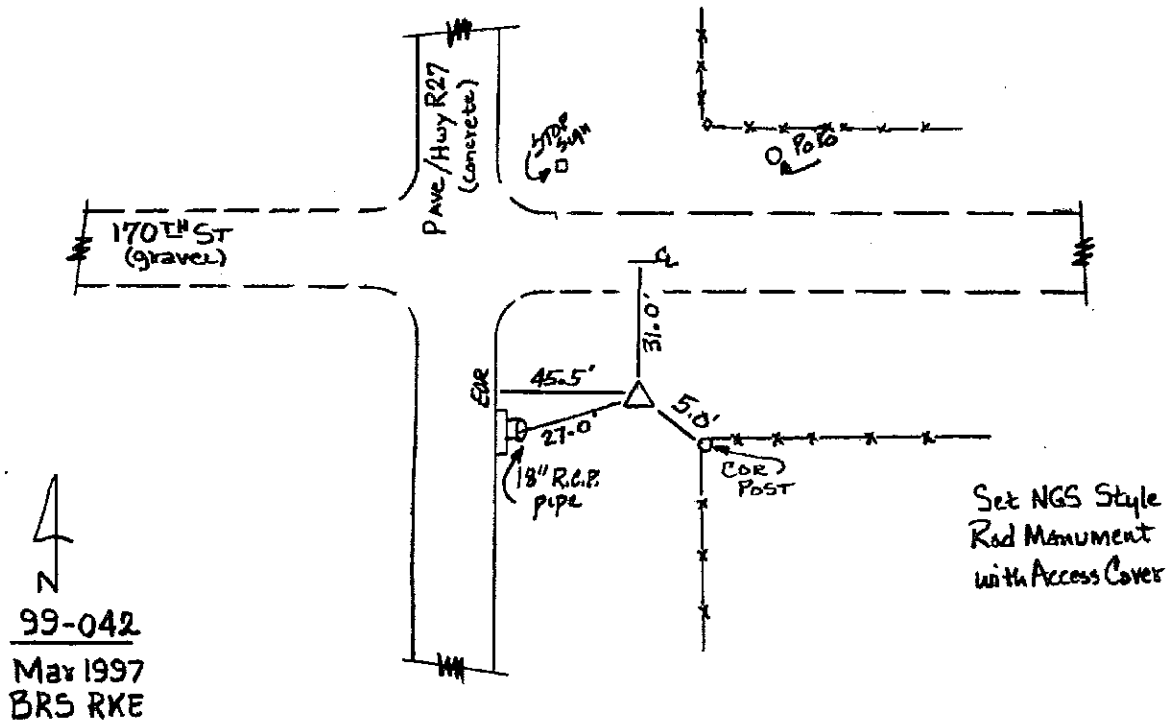
Theta: -0-15-12.06      Combination Factor: 0.99994316

Designation: 99-042 BOONE CO GPS CONTROL PT

**Monument Type:** 5/8" dia driven aluminum rod with a 2-1/2" dia aluminum cap and permanent magnet encased in a 5" dia PVC pipe with an aluminum access cover.

**To Reach:** 38ft S of 170 St, 45ft E of P Av. Near the NW cor of Sec 10 T84N R26W.

Date Printed July 29, 1999



1999  
Boone County, Iowa  
Iowa North Zone (1401)  
NAD\_83(1996)

Point Number: 43

Northing: 3486438.81(Ft)      Easting: 4827701.21(Ft)

Northing: 1062668.676(M)      Easting: 1471486.272(M)

Elev: 1170.11(Ft) NAVD\_88

Elev: 356.649(M) NAVD\_88      Ellip Ht: 328.767(M)      96C Geoid Ht: -27.882(M)

Latitude: 42-03-49.213254 N      Longitude: 93-50-40.207603 W

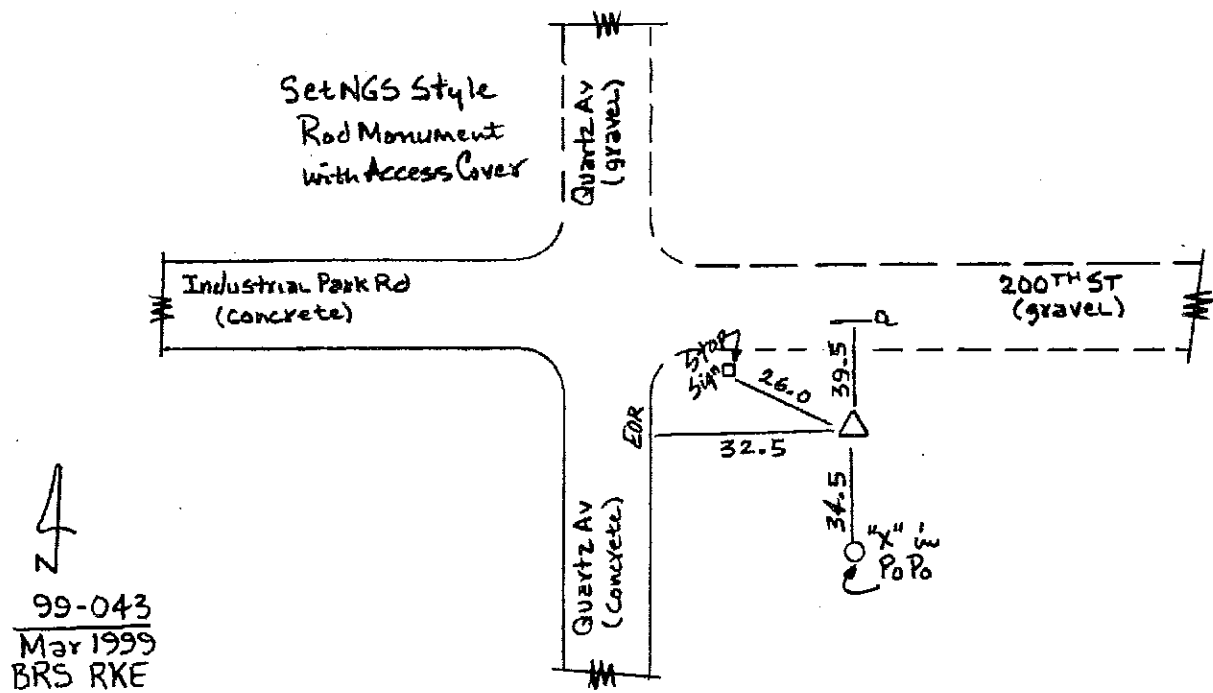
Theta: -0-14-00.54      Combination Factor: 0.99994895

Designation: 99-043 BOONE CO GPS CONTROL PT

**Monument Type:** 5/8" dia driven aluminum rod with a 2-1/2" dia aluminum cap and permanent magnet encased in a 5" dia PVC pipe with an aluminum access cover.

**To Reach:** 40ft S of 200 St, 32ft E of Quartz Av. Near the N 1/4 cor of Sec 26 T84N R26W.

Date Printed July 29, 1999



1999  
Boone County, Iowa  
Iowa North Zone (1401)  
NAD\_83(1996)

Point Number: 44

Northing: 3471521.37(Ft)      Easting: 4818423.21(Ft)

Northing: 1058121.831(M)      Easting: 1468658.333(M)

Elev: 1079.41(Ft) NAVD\_88

Elev: 329.004(M) NAVD\_88      Ellip Ht: 300.953(M)      96C Geoid Ht: -28.051(M)

Latitude: 42-01-21.456532 N      Longitude: 93-52-42.322273 W

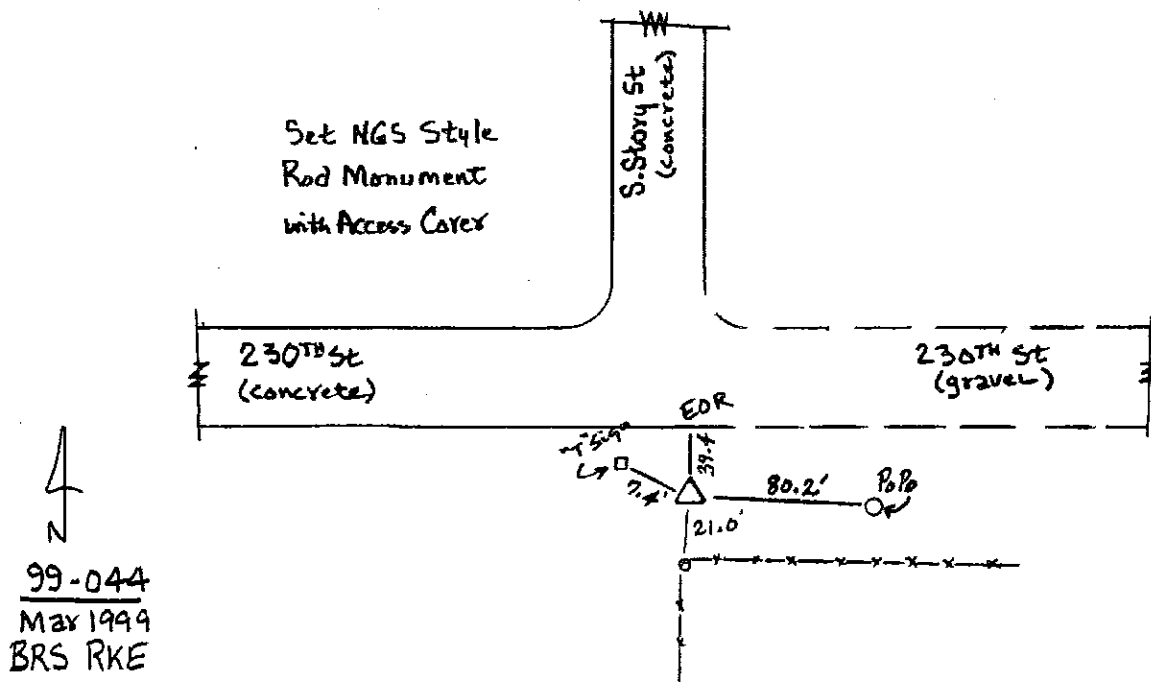
Theta: -0-15-23.31      Combination Factor: 0.99996106

Designation: 99-044 BOONE CO GPS CONTROL PT

**Monument Type:** 5/8" dia driven aluminum rod with a 2-1/2" dia aluminum cap and permanent magnet encased in a 5" dia PVC pipe with an aluminum access cover.

**To Reach:** 40ft S of 230 St, on CL of S Story St to the N. In the NE 1/4 cor of Sec 9 T83N R26W.

Date Printed July 29, 1999





1999  
Boone County, Iowa  
Iowa North Zone (1401)  
NAD\_83(1996)

Point Number: **601**

Northing: **3461446.59(Ft)** Easting: **4740760.22(Ft)**

Northing: **1055051.030(M)** Easting: **1444986.607(M)**

Elev: **1059.44(Ft)** NAVD\_88

Elev: **322.916(M)** NAVD\_88 Ellip Ht: **295.613(M)** 96C Geoid Ht: **-27.304(M)**

Latitude: **41-59-37.201840 N** Longitude: **94-09-50.175204 W**

Theta: **-0-26-59.93** Combination Factor: **0.99996766**

Designation: **Boone Co 3rd order vertical control station 152-1-1 "TT 13 B 1948"**

**Monument Type:** A standard bench mark disk set in the top of a concrete post.

**To Reach:** \*\*\*\*\*See Boone Co Auditor sheet for complete station description\*\*\*\*\*

Date Printed July 29, 1999

1999  
Boone County, Iowa  
Iowa North Zone (1401)  
NAD\_83(1996)

Point Number: **608**

Northing: **3461115.08(Ft)**      Easting: **4851374.76(Ft)**

Northing: **1054949.986(M)**      Easting: **1478701.983(M)**

Elev: **1060.18(Ft)** NAVD\_88

Elev: **323.144(M)** NAVD\_88      Ellip Ht: **294.316(M)**      96C Geoid Ht: **-28.828(M)**

Latitude: **41-59-39.879170 N**      Longitude: **93-45-25.340990 W**

Theta: **-0-10-27.14**      Combination Factor: **0.99996771**

Designation: **CBN control station ET 9 JA PID MH0688**

**Monument Type:** 3-1/4" aluminum disk set in concrete monument.

**To Reach:** \*\*\*\*\*See the current NGS data sheet for complete station description\*\*\*\*\*

Date Printed July 29, 1999

1999  
Boone County, Iowa  
Iowa North Zone (1401)  
NAD\_83(1996)

Point Number: 604

Northing: 3405188.19(Ft)      Easting: 4756611.23(Ft)

Northing: 1037903.438(M)      Easting: 1449818.003(M)

Elev: 966.01(Ft) NAVD\_88

Elev: 294.440(M) NAVD\_88      Ellip Ht: 265.935(M)      96C Geoid Ht: -28.506(M)

Latitude: 41-50-22.629731 N      Longitude: 94-06-14.948187 W

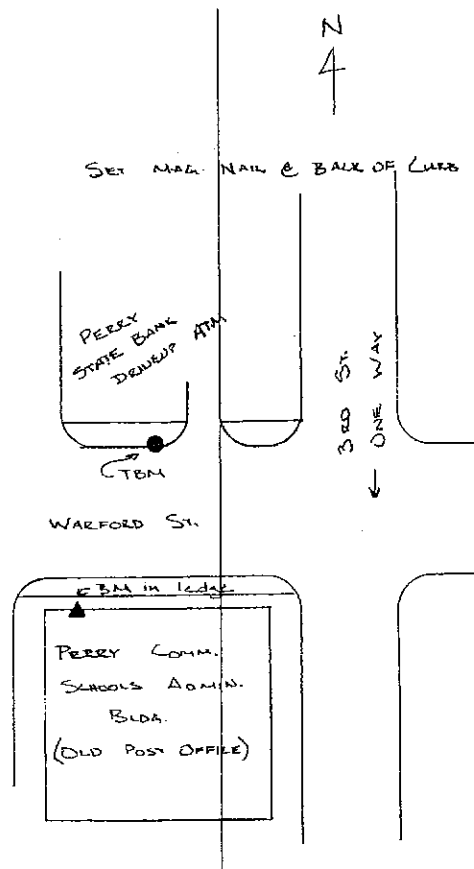
Theta: -0-24-34.06      Combination Factor: 1.00000722

Designation: TBM near U 3 (NGS 1st order vertical PID MJ0071)

Monument Type: 5/8" x 30" deformed rebar set flush with the ground.

To Reach: \*\*\*\*See the current NGS data sheet for complete station description\*\*\*\*

Date Printed July 29, 1999



1999  
Boone County, Iowa  
Iowa North Zone (1401)  
NAD\_83(1996)

Point Number: **605**

Northing: **3382261.71(Ft)**      Easting: **4771655.01(Ft)**

Northing: **1030915.430(M)**      Easting: **1454403.357(M)**

Elev: **1026.43(Ft)** NAVD\_88

Elev: **312.855(M)** NAVD\_88      Ellip Ht: **283.663(M)**      96C Geoid Ht: **-29.192(M)**

Latitude: **41-46-37.164790 N**      Longitude: **94-02-54.254610 W**

Theta: **-0-22-18.04**      Combination Factor: **1.00002066**

Designation: **CBN control station X 3 PID MJ0074**

**Monument Type:** 3-1/4" aluminum disk set in concrete monument.

**To Reach:** \*\*\*\*See the current NGS data sheet for complete station description\*\*\*\*

Date Printed July 29, 1999

1999  
Boone County, Iowa  
Iowa North Zone (1401)  
NAD\_83(1996)

Point Number: 606

Northing: 3486968.10(Ft)      Easting: 4819502.75(Ft)

Northing: 1062830.004(M)      Easting: 1468987.377(M)

Elev: 1122.04(Ft) NAVD\_88

Elev: 341.997(M) NAVD\_88      Ellip Ht: 314.236(M)      96C Geoid Ht: -27.761(M)

Latitude: 42-03-54.097451 N      Longitude: 93-52-28.927044 W

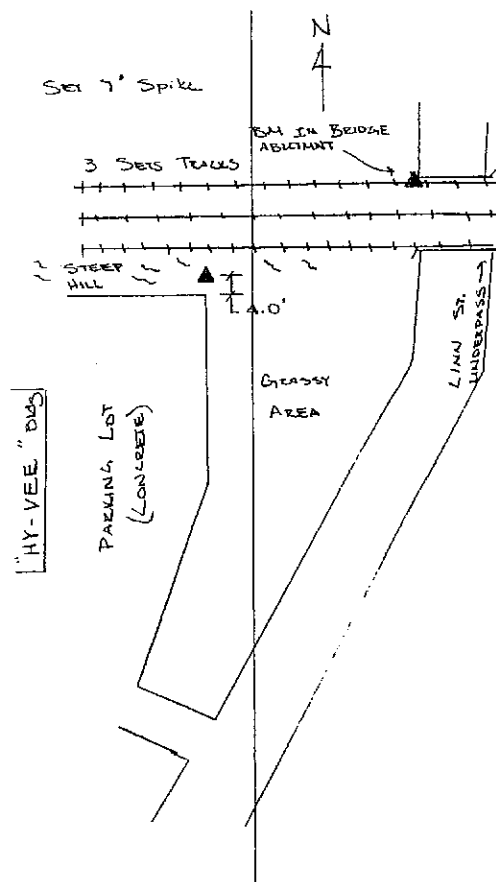
Theta: -0-15-14.23      Combination Factor: 0.99995099

Designation: TBM near Q 32 (NGS 2nd order vertical PID NK0369)

Monument Type: Mag nail set at back of curb flush with walk

To Reach: \*\*\*\*See the current NGS data sheet for complete station description\*\*\*\*

Date Printed July 29, 1999



1999  
Boone County, Iowa  
Iowa North Zone (1401)  
NAD\_83(1996)

Point Number: **607**

Northing: **3560602.31(Ft)**      Easting: **4851669.36(Ft)**

Northing: **1085273.756(M)**      Easting: **1478791.777(M)**

Elev: **1114.09(Ft)** NAVD\_88

Elev: **339.575(M)** NAVD\_88      Ellip Ht: **312.372(M)**      96C Geoid Ht: **-27.203(M)**

Latitude: **42-16-02.695660 N**      Longitude: **93-45-25.445920 W**

Theta: **-0-10-27.22**      Combination Factor: **0.99992061**

Designation: **CBN control station ET 7 JA PID NK0735**

**Monument Type:** 3-1/4" aluminum disk set in concrete monument.

**To Reach:** \*\*\*\*See the current NGS data sheet for complete station description\*\*\*\*

Date Printed July 29, 1999

1999  
Boone County, Iowa  
Iowa North Zone (1401)  
NAD\_83(1996)

Point Number: 600

Northing: 3545493.89(Ft)      Easting: 4772847.01(Ft)

Northing: 1080668.698(M)      Easting: 1454766.678(M)

Elev: 1134.22(Ft) NAVD\_88

Elev: 345.712(M) NAVD\_88      Ellip Ht: 318.853(M)      96C Geoid Ht: -26.859(M)

Latitude: 42-13-29.737490 N      Longitude: 94-02-52.485680 W

Theta: -0-22-16.84      Combination Factor: 0.99992501

Designation: **CBN control station D 3 PID NL0066**

**Monument Type:** 3-1/4" aluminum disk set in concrete monument.

**To Reach:** \*\*\*\*See the current NGS data sheet for complete station description\*\*\*\*

Date Printed July 29, 1999

1999  
Boone County, Iowa  
Iowa North Zone (1401)  
NAD\_83(1996)

Point Number: **603**

Northing: **3477315.81(Ft)**      Easting: **4761867.02(Ft)**

Northing: **1059887.978(M)**      Easting: **1451419.970(M)**

Elev: **1044.17(Ft)** NAVD\_88

Elev: **318.262(M)** NAVD\_88      Ellip Ht: **290.994(M)**      96C Geoid Ht: **-27.268(M)**

Latitude: **42-02-15.508420 N**      Longitude: **94-05-12.131900 W**

Theta: **-0-23-51.49**      Combination Factor: **0.99995973**

Designation: **CBN control station U 88 PID NL0104**

**Monument Type:** 3-1/4" aluminum disk set in concrete monument.

**To Reach:** \*\*\*\*See the current NGS data sheet for complete station description\*\*\*\*

Date Printed July 29, 1999



1999  
Boone County, Iowa  
Iowa North Zone (1401)  
NAD\_83(1996)

Point Number: **602**

Northing: **3476992.52(Ft)**      Easting: **4751282.98(Ft)**

Northing: **1059789.441(M)**      Easting: **1448193.950(M)**

Elev: **1021.97(Ft)** NAVD\_88

Elev: **311.497(M)** NAVD\_88      Ellip Ht: **284.310(M)**      96C Geoid Ht: **-27.187(M)**

Latitude: **42-02-11.565130 N**      Longitude: **94-07-32.354083 W**

Theta: **-0-25-26.52**      Combination Factor: **0.99996099**

Designation: **V 88 NGS 2nd order vertical control station PID NL0106**

**Monument Type:** A standard bench mark disk set in the top of a concrete post.

**To Reach:** \*\*\*\*See the current NGS data sheet for complete station description\*\*\*\*

Date Printed July 29, 1999