


Recorder Use Only



Document 080314
 Book 2008 Page 0314 Type 04 099 Pages 3
 Date 1/21/2008 Time 9:01 AM
 Rec Amt \$.00

SHERYL J THUL, COUNTY RECORDER
 BOONE IOWA

ret. to - Planning & Zoning

**BOARD OF SUPERVISOR
BOONE COUNTY, IOWA**

ORDINANCE NO. 86

**Ordinance amending the official zoning map of Boone County for Kinzler Walters, LLC
from C-1(Commercial) to I-1 (Limited Industrial)**

Approximately 28 ACRES.

Legal Description: PARTS OF THE SW SW OF SECTION 1, TOWNSHIP 83 NORTH, RANGE 25 WEST, BOONE COUNTY, IOWA.

See attachment A

WHEREAS, In this case, Kinzler Walters, LLC has petitioned Boone County to rezone the property described hereinabove from C-1 (Commercial) to I-1 (Limited Industrial) to accommodate PowerFilm Inc.

WHEREAS, The Director of Planning and Development has forwarded a recommendation for approval to the Boone County Zoning Commission with finding of facts as follows; the location of this industrial business conforms to the Comprehensive Plan for industrial and commercial growth. The following conditions were suggested in the staff report: All permits must be obtained from the DNR, and other similar entities. Copies of permits and studies must be submitted to the Planning and Development office.

WHEREAS, The Zoning Commission has held a public hearing in accordance with the Iowa Code and has forwarded a letter of recommendation of approval to the Boone County Board of Supervisors for the rezoning of the property noted hereinabove. The Zoning Commission, with a unanimous vote, recommended approval of the petition by the Board of Supervisors with one condition; all permits must be obtained from the DNR, and other similar entities. Copies of permits and studies must be submitted to the Planning and Development office.

**NOW, THEREFORE, BE IT RESOLVED BY THE BOARD OF SUPERVISORS OF
BOONE COUNTY, IOWA AS FOLLOWS:**

SECTION ONE: That Boone County shall, and it does hereby, approve an amendment to the Official Zoning Map that the property described as follows:

LEGAL DESCRIPTION: PARTS OF THE SW SW OF SECTION 1, TOWNSHIP 83 NORTH, RANGE 25 WEST, BOONE COUNTY, IOWA.

See attachment A

APPROXIMATELY 28 ACRES be rezoned from C-1 Commercial to I-1 Limited Industrial.

SECTION TWO: Approval of this is conditional on the following,

1. All permits must be obtained from the DNR, and other similar entities. Copies of permits and studies must be submitted to the Planning and Development office.

SECTION THREE: That this amendment shall be in full force and effect from and after its passage and approval in the manner provided by law.

ACTION UPON FIRST READING

DATE: December 26, 2007

Moved by: Sorensen

Seconded by: O'Brien

Discussion:

AYES (A), NAYES (N), ABSENT (X):

Albert Sorensen Mike O'Brien David Reed

ACTION UPON SECOND READING

DATE: December 28, 2007

Moved by: O'Brien

Seconded by: Reed

Discussion:

AYES (A), NAYES (N), ABSENT (X):

Albert Sorensen Mike O'Brien David Reed

ACTION UPON FINAL READING

DATE: December 31, 2007

Moved by: O'Brien

Seconded by: Sorensen

Discussion:

AYES (A), NAYES (N), ABSENT (X):

Albert Sorensen Mike O'Brien David Reed

David Reed
Chairman

12-31-07
Date

Boone County Board of Supervisors

Philippe E. Meier

12-31-07
Date

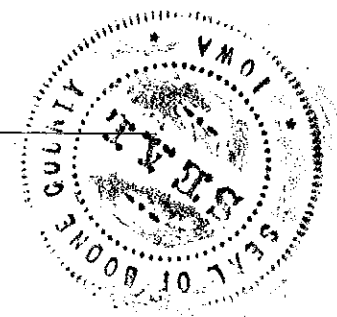
ATTEST:

Philippe E. Meier, County Auditor

I hereby agree to the conditions set forth above.

[Signature]
Applicant Signature

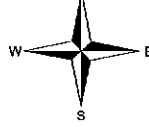
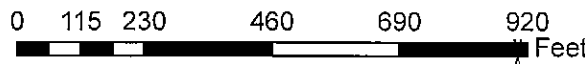
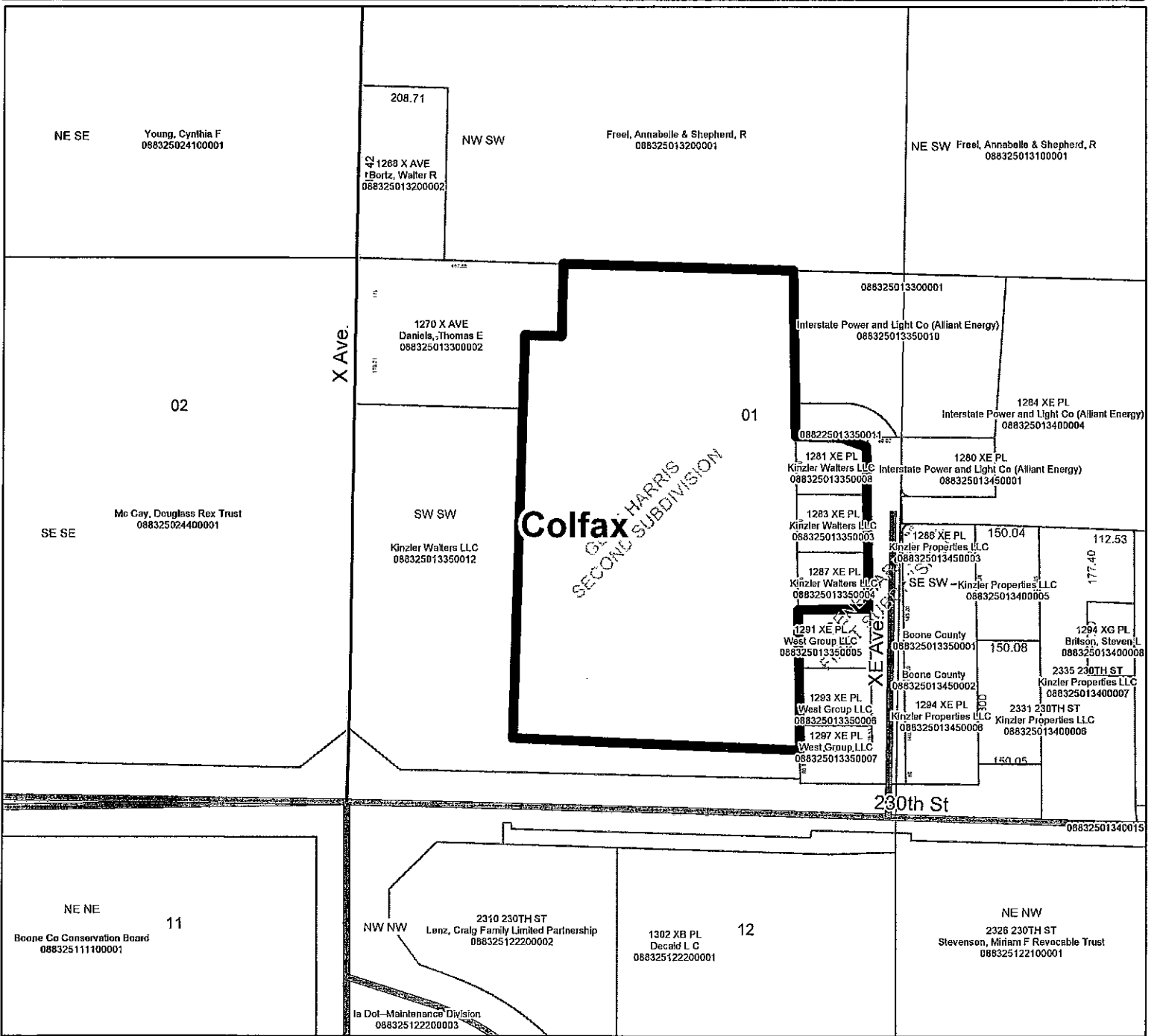
1/17/08
Date



Boone County

Exhibit A

This data is provided "as is" without warranty or any representation of accuracy, timeliness or completeness. The burden of determining accuracy for the appropriateness for use rests solely on the requester. The County makes no warranties, express or implied, as to the use of the data. The requester acknowledges and accepts the limitations of the data, including the fact that the data is dynamic and is in a constant state of maintenance and update.



Legend

- MiscShapes selection
- Buffer_of_homesteads_food_fuel
- Roads**
 - call other values>
 - Gravel
 - Paved
 - Paved Private
- ROAD_TYPE**
- Corporate Limits
- Political Township
- Section Lines
- M4 - 1/4 Sections
- water
- Parcels
- Kinzler, Walters rezoning

